



**Bird on a Wire**  
Stock #: CHD 0901/  
CHD 0901G  
Measures: 65.5 x 82.5  
Retail: \$10.00

CHD 0901

CHD 0901G



**Fly Away Home**  
Stock #: CHD 0902/  
CHD 0902G  
Measures: 64 x 64  
Retail: \$12.00

CHD 0902

CHD 0902G

**Fabric Requirements**

- 2 1/4 yd Black Dot on Blue (Moda 5986 12)
- 1/2 yd Buds on Blue (Moda 5984 12)
- 1 3/8 yd Black Dot on Red (Moda 5986 11)
- 3/8 yd Red Bird on Black (Moda 5982 17)
- 2 yd Red Dot on Beige (Moda 5986 20)
- 1/2 yd White Dot on Black (Moda 5986 19)
- 1 yd Buds on Brown (Moda 5984 14)
- 2 2/3 yd Bird Stripe (Moda 5981 12)
- 4 yd Backing Fabric

**Fabric Requirements**

- 1 yd Red Dots on Beige (Moda 5986 20)
- 1/2 yd Blue Flowers on Beige (Moda 5983 12)
- 3/8 yd Black Dots on Brown (Moda 5986 15)
- 1/2 yd Buds on Blue (Moda 5984 12)
- 1/4 yd Buds on Brown (Moda 5984 14)
- 2 1/2 yd White Dots on Black (Moda 5986 19)
- 5/8 yd Cages on Blue (Moda 5987 12)
- 2 yd Black Dots on Blue (Moda 5986 12)
- 3/8 yd Blue Birds on Beige (Moda 5982 20)
- 1/4 yd Buds on Black (Moda 5984 15)
- 1/8 yd Black Dots on Red (5986 11)
- 3 7/8 yd Backing Fabric



**Birdsongs**  
Stock #: CHD 0903/  
CHD 0903G  
Measures: 57 x 73  
Retail: \$10.00

CHD 0903

CHD 0903G



**Sing to Me**  
Stock #: CHD 0904/  
CHD 0904G  
Measures: 71.5 x 91.5  
Retail: \$10.00

CHD 0904

CHD 0904G

**Fabric Requirements**

- 1 1/4 yd Red Birds on Beige (Moda 5982 19)
- 1 1/4 yd Blue Flowers on Beige (Moda 5983 21)
- 1/3 yd Buds on Red (Moda 5984 11)
- 1 1/4 yd Buds on Blue (Moda 5984 12)
- 1 2/3 yd Red Dots on Beige (Moda 5986 20)
- 1/4 yd Black Dots on Blue (Moda 5986 12)
- 1 yd Black Dots on Red (5986 11)
- 3/4 yd Green Crackle (Moda 5746 65)
- 3 1/2 yd Backing Fabric

**Fabric Requirements**

- 1 Birdsong panel (Moda 5980 14)
- 3 yd Birdsong Border Fabric (Moda 5981 12)
- 1 1/4 yd Red Flowers on Black for blocks (Moda 5983 18)
- 7/8 yd Red Flowers on Beige for blocks (Moda 5983 19)
- 1 2/3 yd Buds on Red for blocks (Moda 5984 11)
- 1/2 yd Buds on Black for blocks (Moda 5984 15)
- 2 2/3 yd Black Dots on Blue for blocks (Moda 5986 12)
- 2 yd White Dots on Black for blocks & binding (Moda 5986 19)
- 1/4 yd Red Dots on Beige for blocks (Moda 5986 20)
- 5 1/3 yd Backing Fabric





Panel measures  
approximately  
24" x 44"

Small blocks  
measure approx.  
4.75" x 4.75"

Large blocks  
measure approx.  
10" x 10"

5980 14

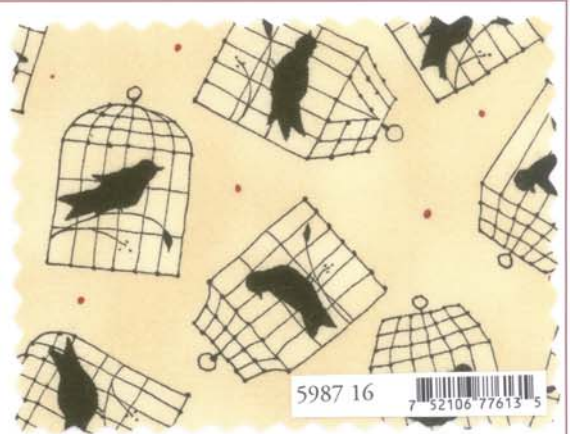


Panel have been reduced approximately 65% to show overall pattern & repeat.





Bird Song  
Kathy Schmitz







Page 3 of 9  
Black




5981 11

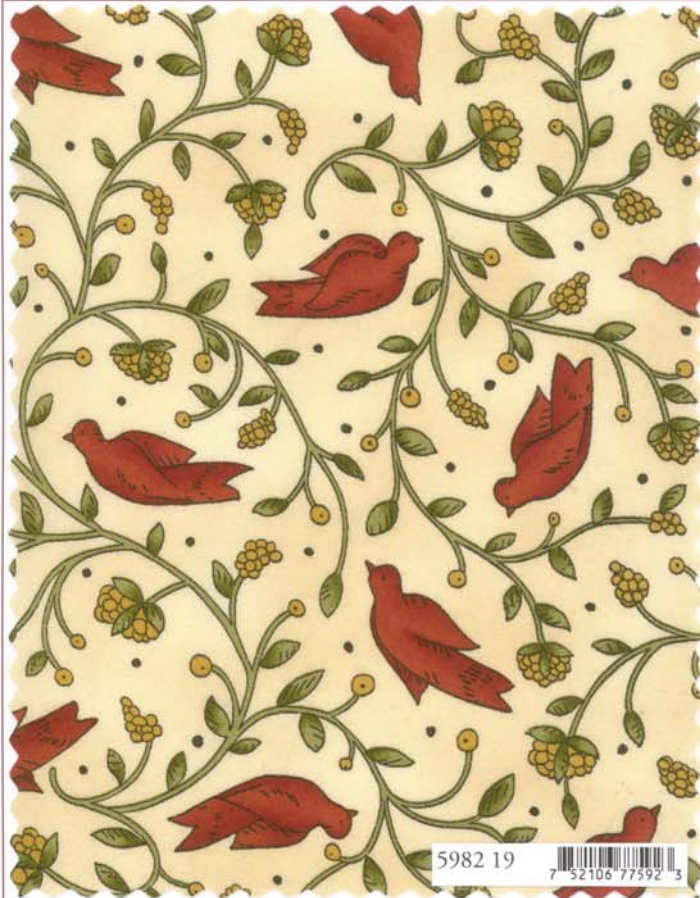






5980 11 





5982 19 



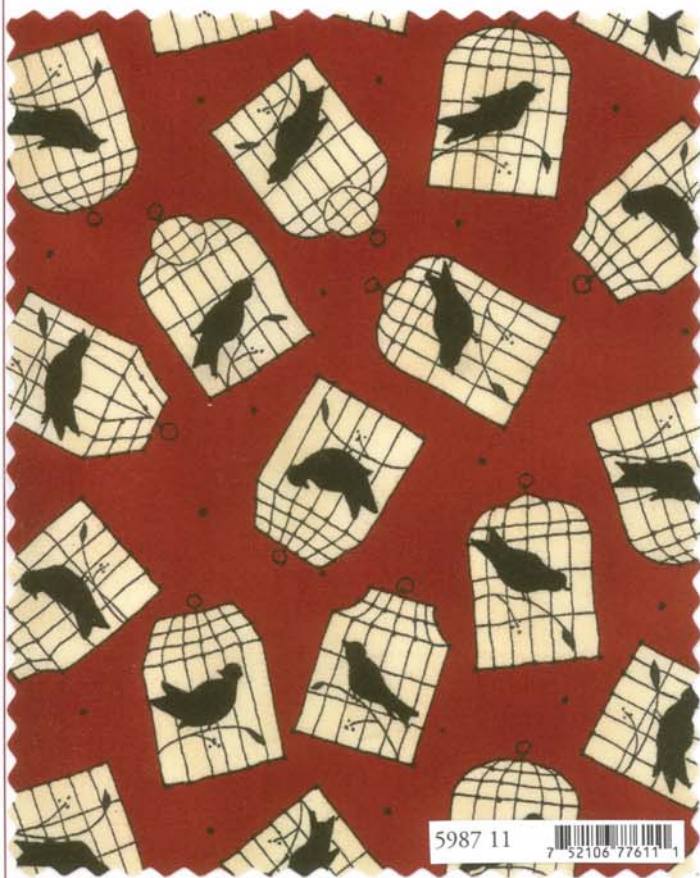
5983 19 



5986 11 

5985 11 

5984 11 



5987 11 

5986 20 









5981 12



7 52106 77590 9



