

Collection for a Cause  
*Faith*  
— 1840-1860 —  
Howard Marcus  
moda



*Seventh in a Series*  
Finished Quilt: 78"x90"



## Fabric Cutting

Sort the fabric pieces by the Round number (Rnd #) shown for easier piecing.



Print #1

1-3½"x 22" (Rnd 11)  
2-4¼"x 4¼" (Rnd 3)



Print #2

1-8½"x WOF  
subcut 2-8½"x 8½" (Rnd 11)  
2-4¼"x 4¼" (Rnd 3)  
12-2"x 2" (Rnd 4)  
1-3½"x 22" (Rnd 11)



Print #3

2-8½"x WOF  
subcut 7-8½"x 8½" (Rnd 11)  
2-4¼"x 4¼" (Rnd 3)  
1-5"x WOF  
subcut 8-5"x 5" (Rnd 11)  
2-1"x WOF  
subcut 8-1"x 10" (Rnd 11)



Print #4

4-5½"x cut length of fabric (Border)  
5-2½"x cut length of fabric (Binding)  
from the remaining cut  
2-4¼"x 4¼" (Rnd 3)  
12-2"x 2" (Rnd 4)



Print #5

1-8½"x WOF  
subcut 3-8½"x 8½" (Rnd 11)  
2-4¼"x 4¼" (Rnd 3)  
4-6½"x WOF (Border)  
1-3½"x 22" (Rnd 11)



Print #6

3-2"x 22"  
subcut 24-2"x 2" (Rnd 4)  
2-4¼"x 4¼" (Rnd 3)



Print #7

3-3½"x WOF  
subcut 56-3½"x 2" (Rnd 4)  
2-2⅞"x 2⅞" (Rnd 2)  
1-2½"x WOF  
subcut 16-2½"x 2½" (Rnd 2)  
*set aside remaining fabric for Rnd 10*



Print #8

1-8½"x WOF  
subcut 2-8½"x 8½" (Rnd 11)  
12-2"x 2" (Rnd 4)  
3-4¼"x WOF  
subcut 24-4¼"x 4¼" (Rnd 7)  
1-3½"x WOF  
subcut 1-3½"x 22" (Rnd 11)  
6-1"x 10" (Rnd 11)



Print #9

5-3"x WOF  
sew strips together  
subcut 2-3"x 39½" (Rnd 8)  
2-3"x 44½" (Rnd 8)  
1-3½"x 22" (Rnd 11)  
2-8½"x 8½" (Rnd 11)



Print #10

1-8½"x WOF  
subcut 2-8½"x 8½" (Rnd 11)  
2-4¼"x 4¼" (Rnd 3)  
12-2"x 2" (Rnd 4)  
6-4½"x WOF  
subcut 48-4½"x 4½" (Rnd 9)  
1-3½"x 22" (Rnd 11)



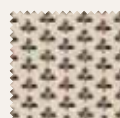
Print #11

1-3½"x WOF  
subcut 1-3½"x 22" (Rnd 11)  
6-1"x 10" (Rnd 11)  
7-3⅛"x WOF  
subcut 80-3⅛"x 3⅛" (Rnd 6)  
1-2"x WOF  
subcut 12-2"x 2" (Rnd 4)  
2-8½"x 8½" (Rnd 11)



Print #12

2-2"x 22"  
subcut 12-2"x 2" (Rnd 4)  
2-4¼"x 4¼" (Rnd 3)



Print #13

1-4¼"x WOF  
subcut 2-4¼"x 4¼" (Rnd 3)  
1-3½"x 22" (Rnd 11)  
4-2"x WOF  
subcut 2-2"x 27½" (Rnd 5)  
2-2"x 24½" (Rnd 5)  
12-2"x 2" (Rnd 4)



Print #14

1-4½"x 22"  
subcut 1-4½"x 4½" (Star)  
2-4¼"x 4¼" (Rnd 3)  
1-2½"x 22"  
subcut 8-2½"x 2½" (Star)  
2-2"x 22"  
subcut 12-2"x 2" (Rnd 4)



Background

15-2½"x WOF  
subcut 12-2½"x 4½" (Rnd 1, 2)  
196-2½"x 2½" (Rnd 1, 9)  
3-4¼"x WOF  
subcut 24-4¼"x 4¼" (Rnd 7)  
7-3½"x WOF  
subcut 40-3½"x 3½" (Rnd 6)  
10-3½"x 10" (Rnd 11)  
2-2⅞"x 2⅞" (Rnd 2)  
8-1"x WOF  
subcut 16-1"x 22" (Rnd 11)

# Construction

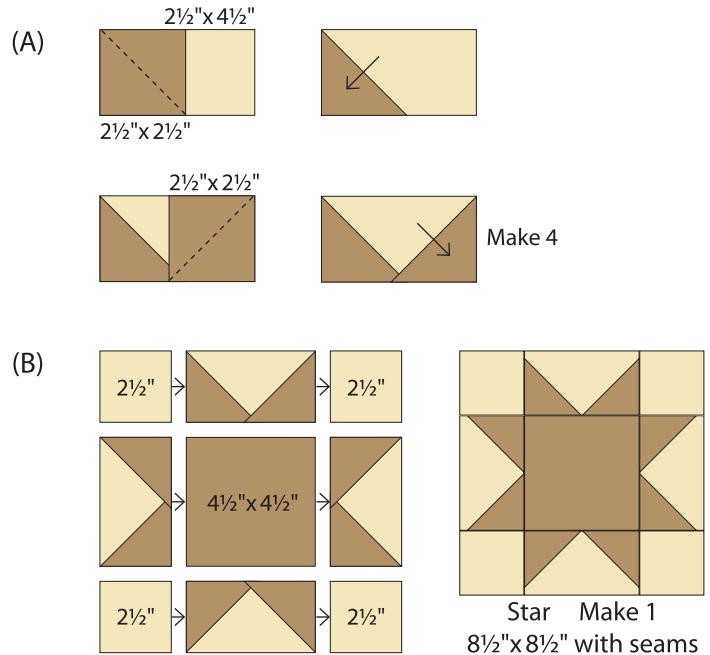
*Faith* is built as a round robin or medallion style quilt – starting with a star block and working outward to the final border.

1

PIECES FOR STAR	
Print #14	1–4½" x 4½"
	8–2½" x 2½"
Background	4–2½" x 4½"
	4–2½" x 2½"



- (A) Sew 2–2½" x 2½" Print #14 on the diagonal to 1–2½" x 4½" Background rectangle. *See diagram.* Press to the corner to form the triangles. Repeat to make 4 flying geese.
- (B) Combine 4–2½" x 2½" Backgrounds, 4 flying geese and 1–4½" x 4½" Print #14 to make the center star. *See diagram.*



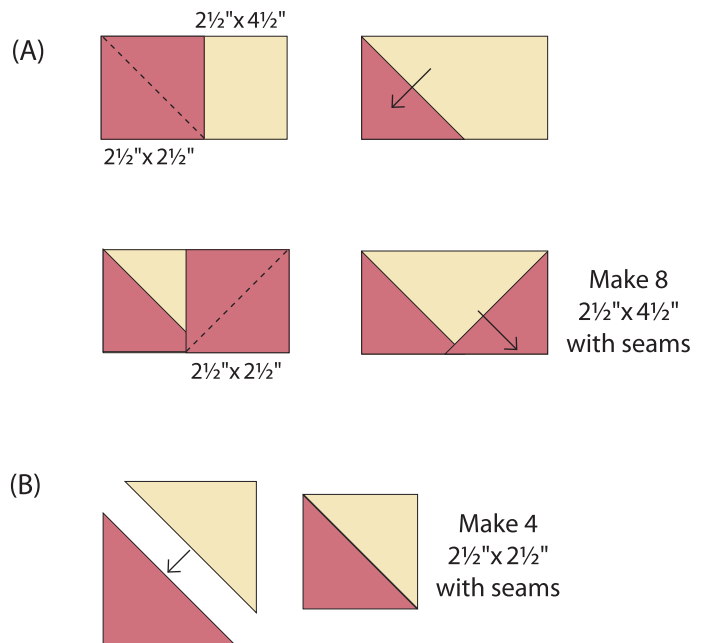
Quilt top is now 8½" x 8½" with seams

2

PIECES FOR ROUND #2	
Print #7	16–2½" x 2½"
	2–2⅞" x 2⅞"
	cut once diagonally
Background	8–2½" x 4½"
	2–2⅞" x 2⅞"
	cut once diagonally



- (A) Sew 2–2½" x 2½" Print #7 squares on the diagonal to 1–2½" x 4½" Background rectangle. *See diagram.* Press to the corners to form the triangles. Repeat to make 8 flying geese.
- (B) Sew 1–2⅞" Print #7 and 1–2⅞" Background together. Make 4.

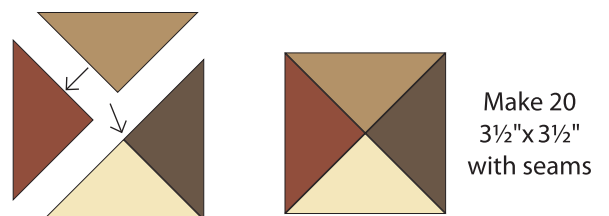


Quilt top is now 12½" x 12½" with seams

3

PIECES FOR ROUND #3	
Assorted	20–4¼" x 4¼"
	cut twice diagonally

Sew 4 quarter square triangles together. Make 20.



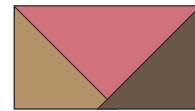
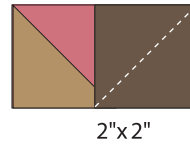
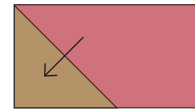
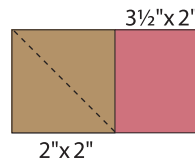
Quilt top is now 18½" x 18½" with seams

moda

4

## PIECES FOR ROUND #4

Print #7 56-3½"x2"  
Assorted\* 112-2"x2"



Sew 2-2"x2" Assorted print squares on the diagonal to 1-3½"x2" Print #7 rectangle. *See diagram.*  
Press to the corners to form the triangles.  
Repeat to make 56 flying geese.

Quilt top is now 24½"x24½" with seams

5

## INNER BORDER #5

Print #13 2-2"x24½"  
2-2"x27½"



Add the 2-2"x24½" Print #13 borders to the sides of the quilt.

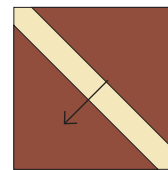
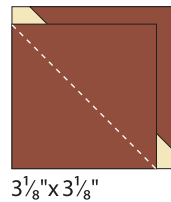
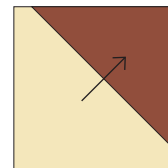
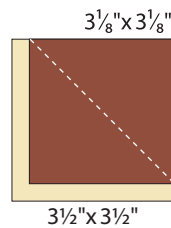
Add the 2-2"x27½" Print #13 borders to the top and bottom.

Quilt top is now 27½"x27½" with seams

6

## PIECES FOR ROUND #6

Print #11 80-3⅛"x3⅛"  
Background 40-3½"x3½"



Sew 2-3⅛"x3⅛" Print #11 squares on the diagonal to 1-3½"x3½" Background square. *See diagram.* Press to the corner to form the triangles. Repeat to make 40 blocks.

Quilt top is now 33½"x33½" with seams

7

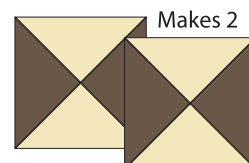
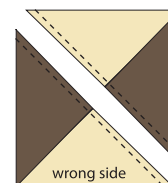
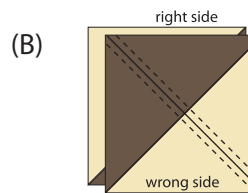
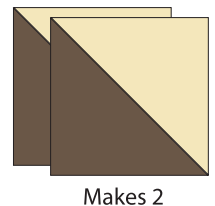
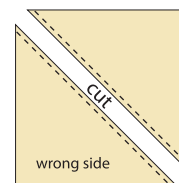
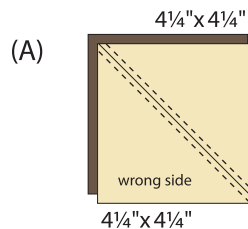
## PIECES FOR ROUND #7

Print #8 24-4¼"x4¼"  
Background 24-4¼"x4¼"



(A) Draw a diagonal line on the back of the Background squares. Layer 1-4¼"x4¼" Print #8 and 1-4¼"x4¼" Background square right sides together. Sew ¼" on each side of the diagonal line. Cut on the diagonal line. Press open.

(B) Turn one half square triangle unit to its reverse side and draw a diagonal line from one corner to another, perpendicular to the seam. Position the two half square units right sides together, with contrasting triangles facing each other. Repeat sewing on each side of the line then cut. Make 48.



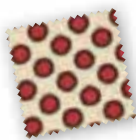
Make 48  
3½"x3½"  
with seams

Quilt top is now 39½"x39½" with seams

8

**INNER BORDER #8**

Print #9 2-3" x 39½"  
2-3" x 44½"



Print 9

Quilt top is now 44½" x 44½" with seams

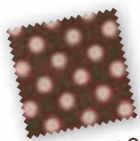
Add the 2-3" x 39½" Print #9 borders to the sides of the quilt.

Add the 2-3" x 44½" Print #9 borders to the top and bottom.

9

**PIECES FOR ROUND #9**

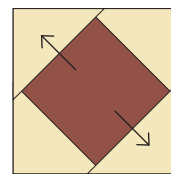
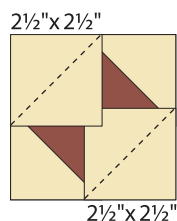
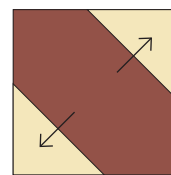
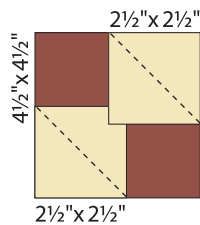
Print #10 48-4½" x 4½"  
Background 192-2½" x 2½"



Print 10

Sew 4-2½" x 2½" Background squares on the diagonal to 1-4½" x 4½" Print #10 square. *See diagram.*  
Press to the corners to form the triangles.  
Repeat to make 48 blocks.

Quilt top is now 52½" x 52½" with seams



Make 48  
4½" x 4½"  
with seams

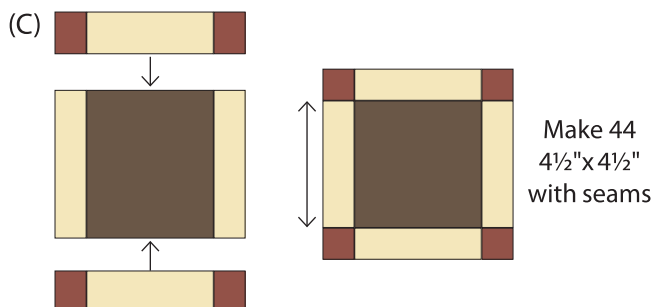
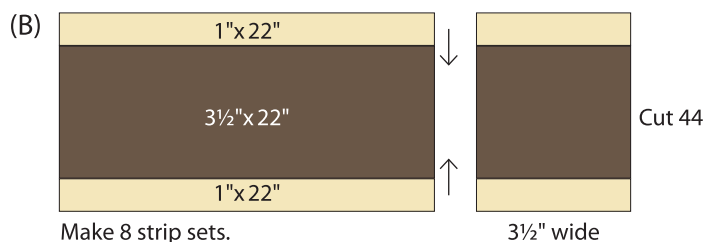
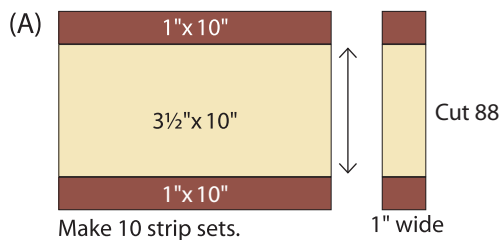
10 *Due to the number of seams in the blocks in Round 11, we will wait to add this border until after the rows for Round #11 have been pieced.*

11

**PIECES FOR ROUND #11**

Assorted 8-3½" x 22"  
20-1" x 10"  
Background 10-3½" x 10"  
16-1" x 22"

- (A) Sew 2-1" x 10" Assorted and 1-3½" x 10" Background strips together. Make 10 strip sets. Cut into 88 segments that are 1" wide.
- (B) Sew 2-1" x 22" Background and 1-3½" x 22" Assorted strips together. Make 8 strip sets. Cut into 44 segments that are 3½" wide.
- (C) Combine units to make the block. *See diagram.* Double check measurement and adjust seam allowances, if necessary, before stitching the remaining 43 blocks. Make 44 blocks total.
- (D) Each block should measure 4½" x 4½" with seams.

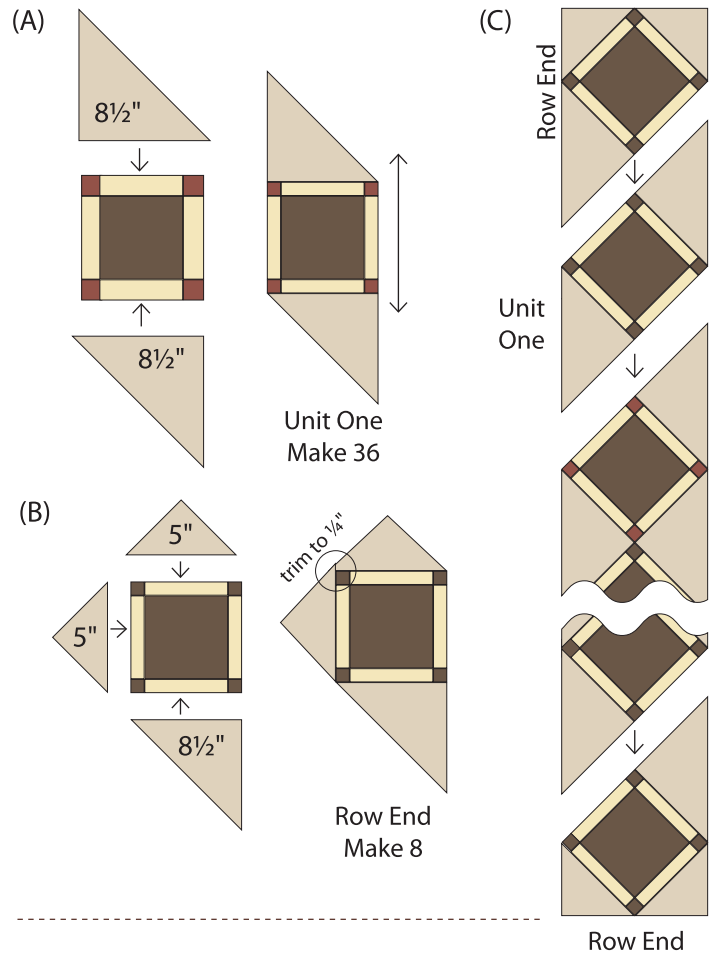


moda

## ROUND #11 CONTINUED

Assorted 20-8½" squares  
cut twice diagonally  
8-5" squares  
cut once diagonally

- (A) Sew 2-8½" Assorted quarter square triangles to opposite sides of the block. *See diagram.* Make 36.
- (B) Sew 1-8½" Assorted quarter square triangle and 2-5" Assorted half square triangles to each side of the block. *See diagram.* Make 8. These are the Row Ends.
- (C) Combine 8-Unit One blocks and 2 Row Ends to make a row. Make 2 Side Rows.  
Combine 10 blocks and 2 Row Ends to make a row. Make 2 for the Top and Bottom Rows.



## BACK TO ROUND #10

### Round #10 (Print #7):

If your quilt top (A) measures 52½" thru Round #9

and the your shorter Round #11 pieced border (B) measures 57¼" - **Cut 6 - 2⅞" x WOF strips** for Round #10 borders. Using a bias seam join strips end to end. Press seams open. **Then**

Cut 2-2⅞" x 52½" strips side borders (X)

Add to opposite sides of quilt. Press seams toward border.

Cut 2-2⅞" x 57¼" strips for the top and bottom borders (Y)

Add borders strips to top and bottom of quilt. Press seams toward border.

If your top (A) and border (X) do not have the above measurements, please use the chart below to figure the width and length for your Round # 10 border strips

Measure A & B:

\_\_\_\_\_ A = width of quilt top after Rnd #9

\_\_\_\_\_ B = length of Side Row Rnd #11

Determine the *width* of Round #10 borders:

(B minus A)divided by 2 = border width (W)

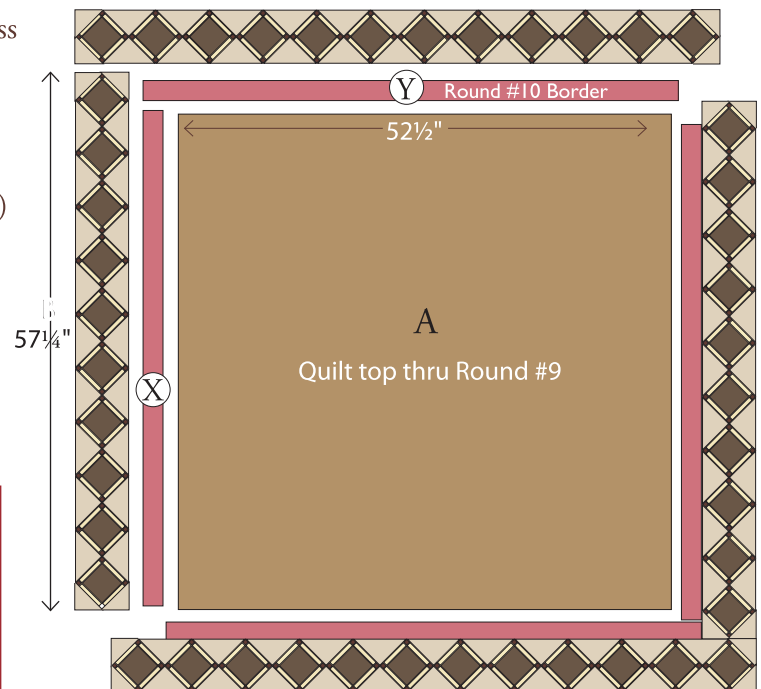
(W=2.3125 round to nearest eighth =2⅜")

Determine the *length* of Border "X":

A = length of X (52½")

Determine the *length* of Border "Y":

A + (2 times (border width "W") + ½" = length of Y (57¼")

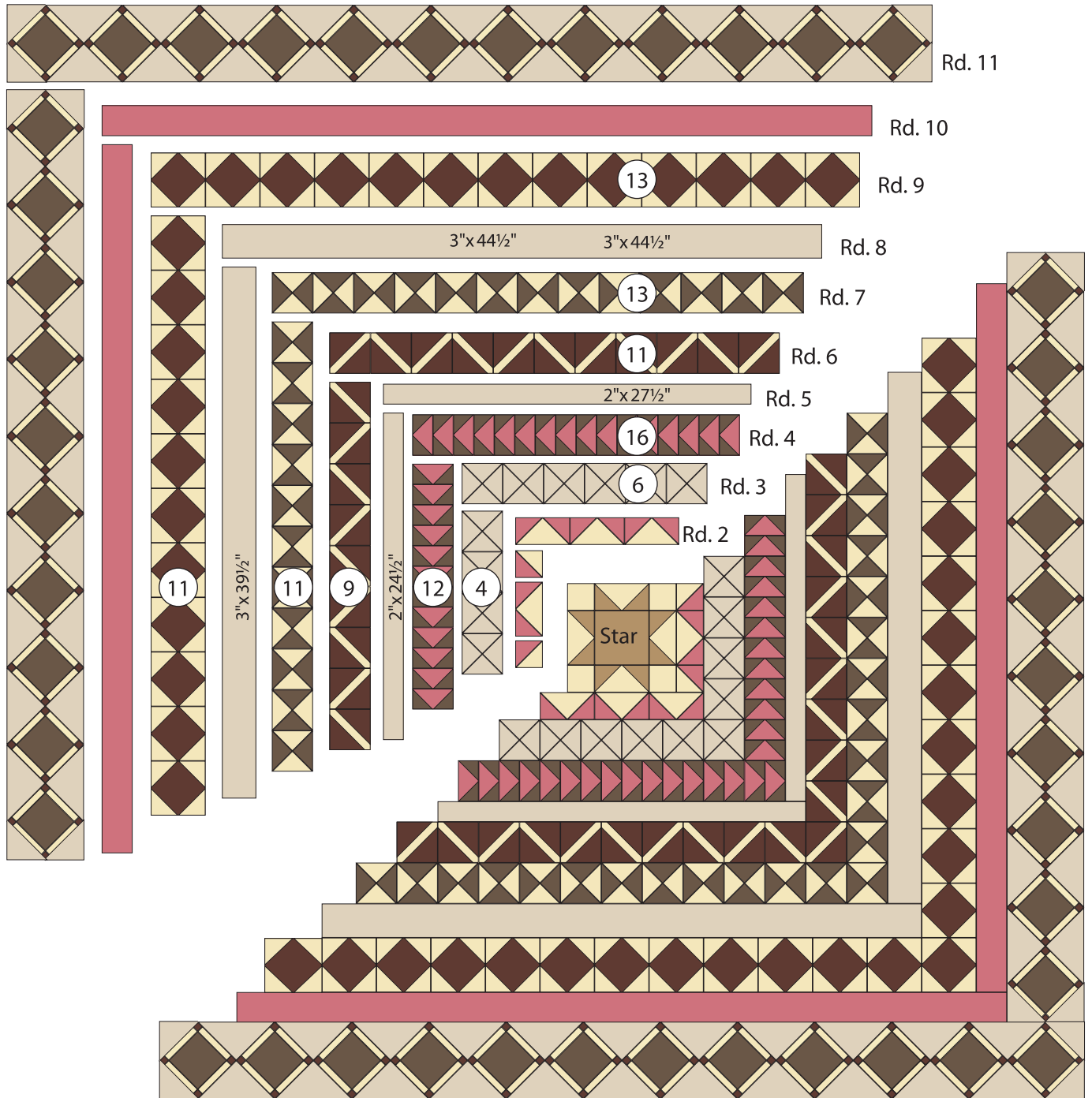


**Then** Cut 6 - "W" plus ½" x WOF strips for Round #10 borders. Using a bias seam join strips end to end. Press seams open. **Then**  
Cut 2-"W" plus ½" x length of "X" side borders  
Cut 2-"W" plus ½" x length of "Y" for the top and bottom borders

# Assembly

Starting in the middle with the star, the star is round one, add the rounds to the quilt sides first then the top and bottom.

## Chart of blocks per row (#)



*moda*

Quilt is 78"x90" finished



## ADD ROUND #10 AND ROUND #11

Add the Round #10 Inner Border sides first then top and bottom.

Add the Round #11 sides first then top and bottom.

## FINAL BORDERS

Measure across the center of the quilt top for the best measurements for the length Final Borders.

Sew 2-5½" wide Print #4 strips to the side of the quilt top.

Sew 2-5½" Print #4 strips to the top and bottom of the quilt top.

Sew the 4-6½" wide Print #5 strips together.

Sew 2-6½" Print #5 strips to the top and bottom of the quilt top.

## FINISHING

Prepare the binding. Sew binding strips together, end to end.

Press binding strips in half lengthwise with wrong sides together.

To quilt, layer and baste the quilt top, batting and backing.

Quilt by machine or by hand. Apply the prepared binding to quilt.



Print 4



Print 5

## Faith

*is an inspiration quilt.*

*We found the original 1840-1860 quilt in Massachusetts. It is a quirky summer weight quilt with wonderful pinks and browns. The quilt-maker, perhaps a child, seemed to be an imaginative beginner... trying different blocks as she built the various rounds of this medallion style quilt.*

*The workmanship is hit or miss, leading us to wonder if more than one person, perhaps a younger sister, helped piece this quilt.*

*Our designers have squared-up the various rounds for faster and easier piecing.*

*It is our hope that you will enjoy this one-of-kind quilt of pinks and browns.*

## Fabrics



Print 1  
46090 12"x22"



Print 6  
46094 17  
12"x22"



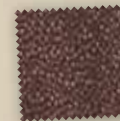
Print 11  
46098 10  
1½ yards



Print 2  
46091 13  
½ yard



Print 7  
46095 10  
one yard



Print 12  
46099 10  
12"x22"



Print 3  
46092 10  
¾ yard



Print 8  
46096 10  
⅞ yard



Print 13  
46100 10  
½ yard



Print 4  
46093 10  
2⅓ yards



Print 9  
46097 10  
⅞ yard



Print 14  
46100 13  
fat quarter



Print 5  
46094 10  
1¼ yards



Print 10  
46097 14  
1¼ yards



Background  
46102 11  
2¾ yards

## BACKING

5½ yards

*Please note, kit yardage may vary slightly from amounts given on this project sheet.*

*Supporting the Cause – The Coalition to Salute America's Heroes*

*moda*

MODAFABRICS.COM

PS46090 — SUGGESTED RETAIL \$6.00