

Posh Pumpkins *Sandy Gervais*

These pumpkins are looking very *Posh* for a night out at the pumpkin patch! Embellished with lavish jacobean, paisleys, and other rhythmic patterns in an autumnal palette of golden ochres,

burnt oranges and warm olive greens, these prints are at their peak and you can almost smell the fall in the air!



17730 11 Wheat

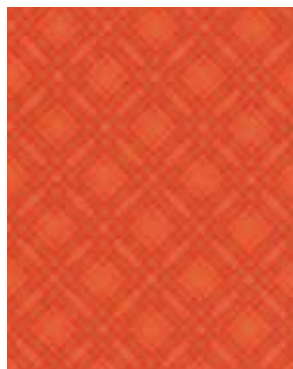
Panels

Panel 24"x45"

Blocks approx. 9½"x9½"



17730 14 Acorn



17737 17 Pumpkin



*17738 27 Pumpkin



17738 28 Red Maple



*17731 17 Pumpkin



17732 18 Red Maple

FYI: piecesfrommyheart.net



17733 11 Wheat



*17731 11 Wheat



*17732 11 Wheat



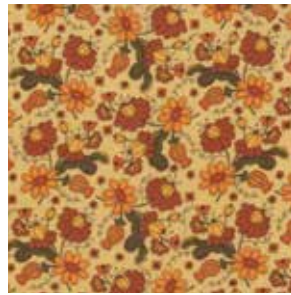
*17736 23 Wheat



17739 21 Wheat

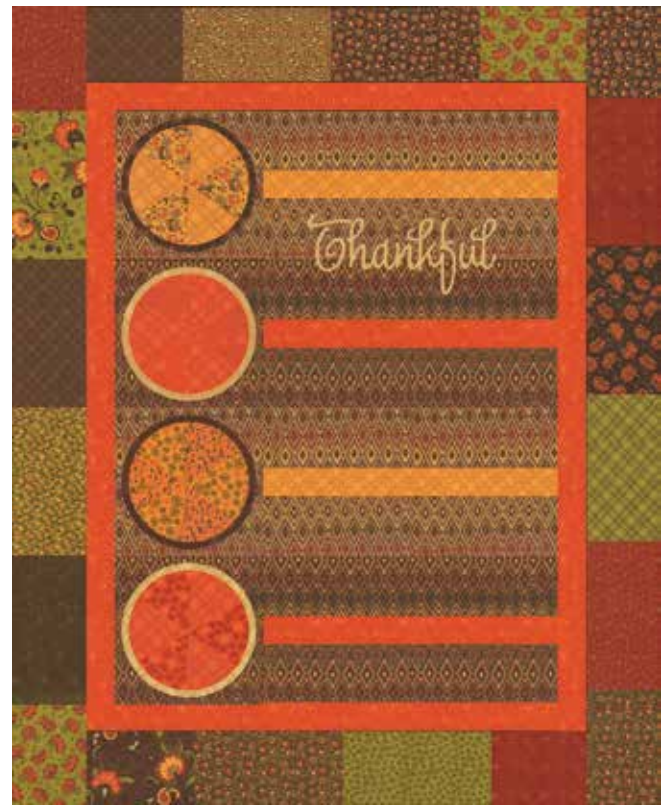


*17737 11 Wheat



*17734 11 Wheat

moda



PH 574 or PH 574G— Thankful for Pie 43"X 53"



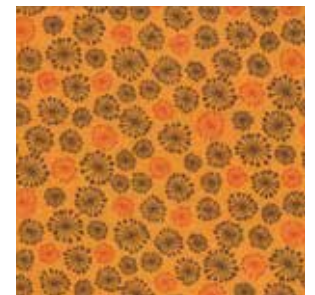
17738 11 Wheat



17736 16 Goldenrod



*17737 16 Goldenrod



17738 26 Goldenrod



*1 Pattern
1 Panel =
1 Quilt
4 Placemats*



*17734 16 Goldenrod



PH 571 or PH 571G — Posh Pumpkin
Quilt – 40"X 40" Placemats 16"X 22"



moda

ORDER ONLINE 24 HRS. @ MODAFABRICS.COM



PH 573 or PH 573G— Autumn Breeze 52"X 60"



*17739 13 Moss



17736 12 Moss

moda



PH 572 or PH 572G — Peak Color 26"X 28"



*17737 12 Moss



*17736 14 Acorn



*17734 15 Dark Brown



*17738 21 Moss



*17731 12 Moss



17734 13 Dk Green



*17733 12 Moss



*17737 14 Acorn



17739 24 Acorn



17732 15 Dark Brown



17731 14 Acorn



PH 575 or PH 575G — Little Jacks 10"X 15"



17738 24 Acorn



17733 15 Dark Brown



7521 581 Wheat



7521 587 Pumpkin



7521 588 Red Maple



7521 582 Moss



7521 583 Dk. Green

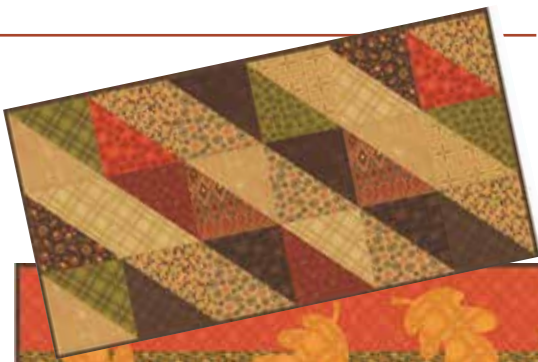


7521 584 Acorn

Sandy Solids

Topper Trio

3 PROJECTS - 1 PATTERN
dessert roll friendly



PH 576 or PH 576G — Topper Trio Multiple Sizes

17730

Asst.
15

Asst.
10

Low Cal
20

AB

DR

JR

LC

MC

PP

• 40 Prints
• 100% Premium Cotton

AB Bundle includes one Panel - 17730-11 JR's, LC's MC's & PP's include 2 each of 17737-11 & 17

Delivery: May, 2013

Posh Pumpkins Patterns & Yardage



1 Pattern

1 Panel =

1 Quilt

4 Placemats

Pieces From My Heart – PH

Posh Pumpkins

Quilt 40"x40" Placemat 16"x22"

PH 571 or PH 571G



Pieces From My Heart – PH

Little Jacks 10"x15"

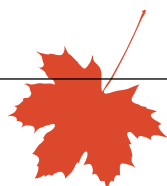
PH 575 or PH 575G



Yardage		1Q	10 Qs
17730-11	panel	1	10
17736-12	blocks	$\frac{2}{3}$	$6\frac{2}{3}$
17737-16	blocks	$\frac{3}{4}$	$7\frac{1}{2}$
7521-584	blocks and prairie points	$1\frac{1}{4}$	$12\frac{1}{2}$
17738-27	bord. & binding	$1\frac{1}{8}$	$11\frac{1}{4}$
17731-12	backing	$2\frac{2}{3}$	$26\frac{2}{3}$

Additional Yardage for Placemats

17736-12		$\frac{2}{3}$	$6\frac{2}{3}$
17737-16		$\frac{3}{4}$	$7\frac{1}{2}$
7521-584		$1\frac{1}{4}$	$12\frac{1}{2}$
17738-27		$\frac{3}{8}$	$3\frac{3}{4}$
17731-12		$1\frac{1}{3}$	15



Yardage		1Q	10 Qs
17730MC	Blocks	1	10
7521-581	Sashing, bord. & binding	$\frac{3}{8}$	$3\frac{3}{4}$
17734-11	Backing	$\frac{3}{8}$	$3\frac{3}{4}$

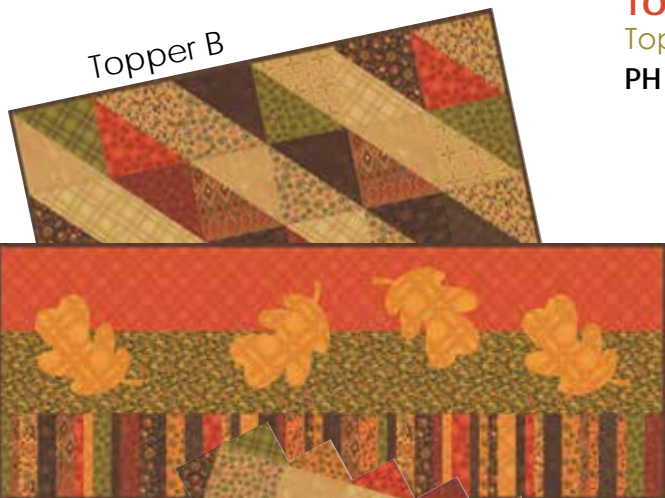
Dessert Roll Friendly

Pieces From My Heart – PH

Topper Trio

Topper A 13"x36" Topper B 13"x27" Topper C 27"x27"

PH 576 or PH 576G

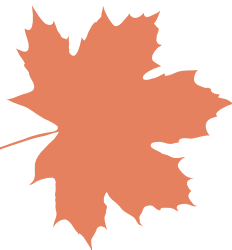
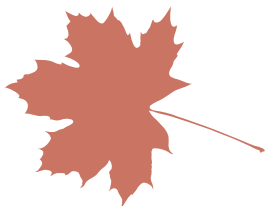


Topper B

Topper A



Topper C



Pieces From My Heart – PH

Peak Color 26"x28"

PH 572 or PH 572G

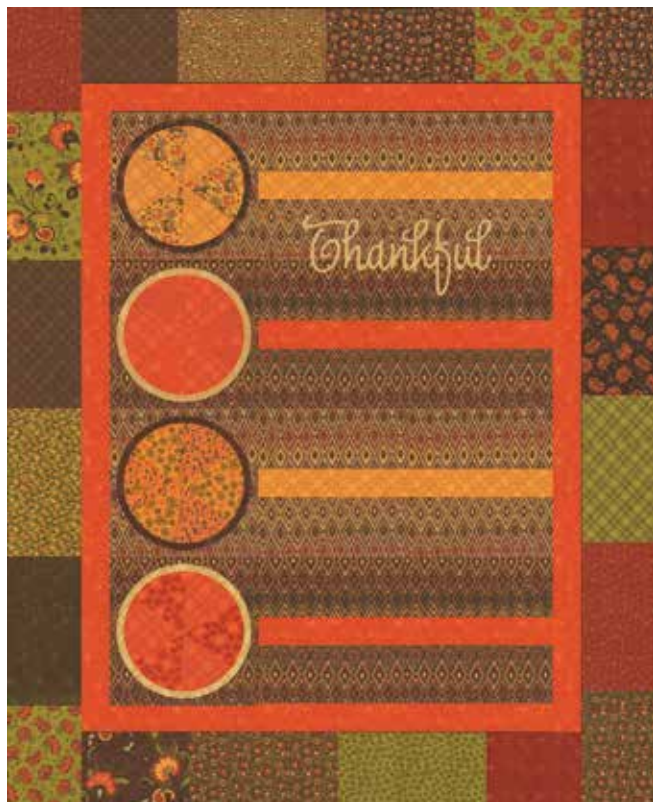
Yardage		1Q	10 Qs
17730PP	borders & app.	1	10
7521-584	tree and binding	$\frac{5}{8}$	$6\frac{1}{4}$
17739-21	tree background	$\frac{3}{4}$	$7\frac{1}{2}$
17733-15	backing	$\frac{7}{8}$	$8\frac{3}{4}$

Yardage		1Q	10 Qs
17730DR	Makes 3 Toppers	1	10
7521-584	Binding	$\frac{1}{4}$	$2\frac{1}{2}$
17736-12	Backing-Topper A	$\frac{1}{2}$	5
17737-14	Binding	$\frac{1}{4}$	$2\frac{1}{2}$
17732-15	Backing-Topper B	$\frac{1}{2}$	5
17731-11	Backing-Topper C	$\frac{3}{4}$	$7\frac{1}{2}$

moda

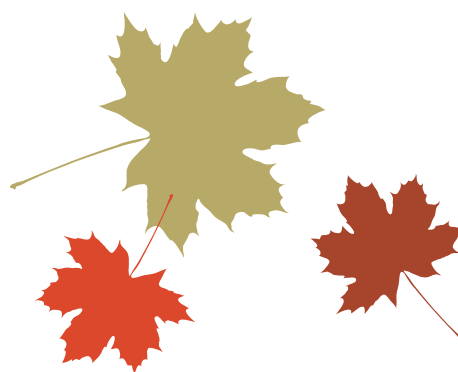


Yardages provided at the time of this printing may change. Please consult the printed pattern before cutting kits.



Pieces From My Heart – PH
Thankful for Pie 43"x53"
 PH 574 or PH 574G

Yardage		1Q	10 Qs
17730LC	pies & Border	1	10
17732-11	stripe bkgd	1/3	3 1/3
17732-15	stripe bkgd	1/3	3 1/3
17732-18	stripe bkgd	1/3	3 1/3
17737-16	stripe	1/8	1 1/4
7521-587	stripe & border	1/2	5
7521-584	binding	3/8	3 3/4
17731-14	backing	3	30



Pieces From My Heart – PH
Autumn Breeze 52"x60"
 PH 573 or PH 573G

Yardage		1Q	10 Qs
17730JR	blocks & borders	1	10
7521-571	block bkgd & borders	2 1/2	22 1/2
7521-584	bord. & bind.	7/8	8 3/4
17739-24	backing	3 1/3	33 1/3