



 **CORAL** 
* QUEEN OF THE SEA *
STACY IEST HSU

Enjoy all the beauty of the sea with this whimsical collection Coral, Queen of the Sea – named after an adventurous little cut-and-sew mermaid. With giant waves and bubbles that tickle your toes, the collection is filled with prints inspired by Coral's adventures swimming through deep-sea gardens with sea creatures.



Follow
Stacy Iest Hsu
on 

Panel includes doll, skirt, mermaid fins, sea horse friend, sweet dreams pillow, and mini quilt.





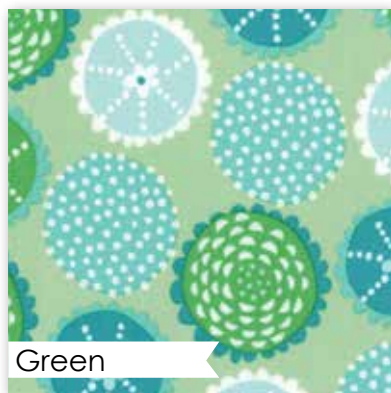
Multi

20510 11
 Reduced to show full panel. Panel measures 36" x 44".



Green

20515 16



Green

20514 16



White

20513 11



White Ocean

20515 21



Lagoon

20512 14



Lagoon

20513 14



Lagoon

20516 14



Aqua

20512 12



Aqua

20511 12



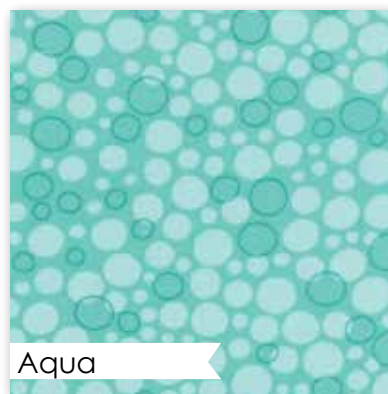
Aqua

20514 12



Aqua

20513 12



Aqua

20516 13



Aqua

20515 12



White

20512 11



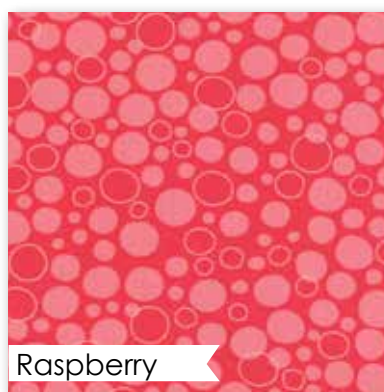
White

20511 11



Raspberry

20513 17



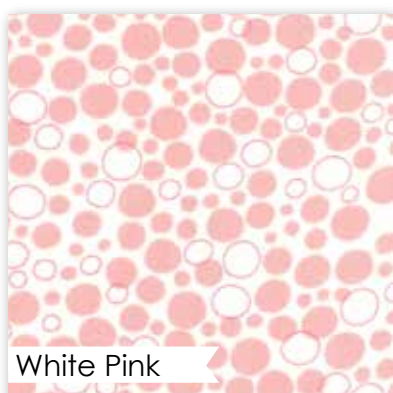
Raspberry

20516 17



White Multi

20515 11



White Pink

20516 11



White

20514 11



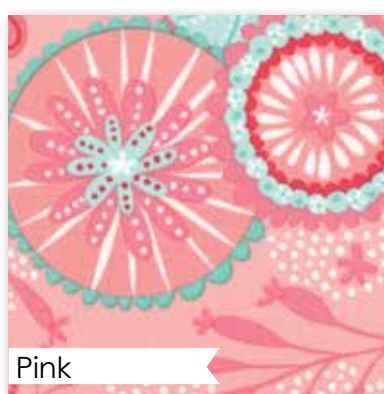
Pink

20511 15



Pink

20514 15

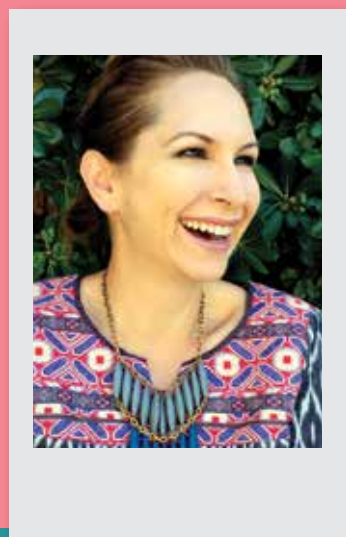


Pink

20513 15



There's a million fish in the sea,
but I'm a
Mermaid



20510

Asst. 15

Asst. 10

AB

JR

LC

MC

PP

• 100% Premium Cotton • 24 Prints
AB's Panel is 1 Yard. JR's, LC's, MC's, & PP's do not include Panels.
JR's, LC's, MC's, & PP's include two each of 20513, 20514, 20515, & 20516.

Delivery: April, 2016