

moda



Courtyard 3 Sisters

Quilt is 67½" x 72½".

Courtyard

3 Sisters

Quilt is 67½" x 72½".

Construction -cont. Use ¼" seams and press in the direction of the arrows.

Cutting

Stars and Flying Geese

From EACH of the 1 yards, cut
2-5½" x width of fabric strips

From the strips, cut 17-5½" x 3"
1-4½" x width of fabric strip
1-3" x width of fabric strip

From the strip, cut 10-3" x 1¾"
5-2½" x width of fabric strips

Background

5-20" x width of fabric strips

From the strip, cut 9-20" squares
22-3" x width of fabric strips

From the strip, cut 300-3" squares
7-1¾" x width of fabric strips

From the strip, cut 168-1¾" squares

Binding

8-2½" x width of fabric strips

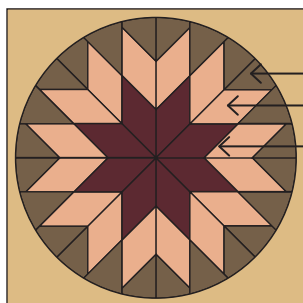
Sew the strips end to end to make the binding

moda

Construction

Note:

Each of the 9 star prints are used once for the center, middle, and outside of the star.

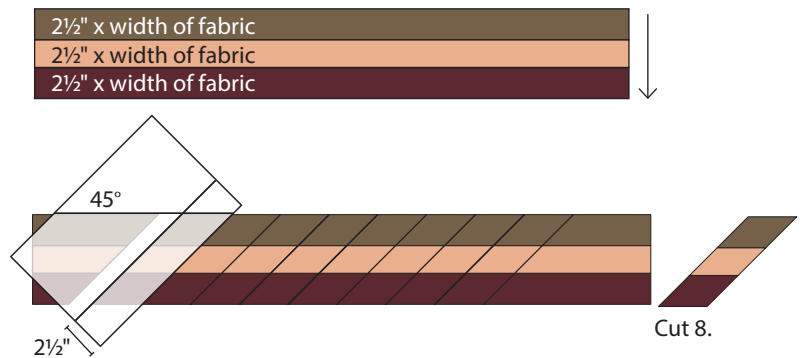


outside
middle
center

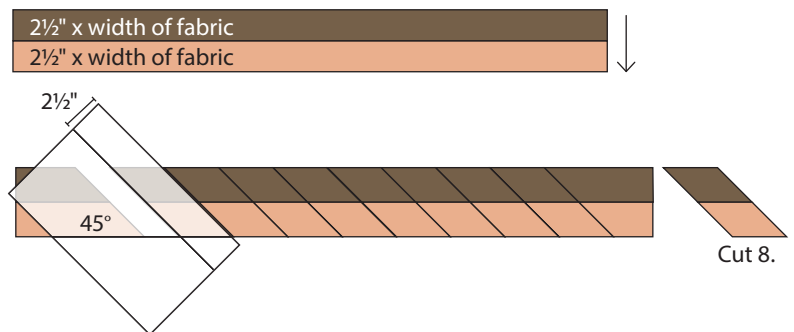
1 To make 1 star select

star center: 1-2½" x width of fabric strip
star middle: 2-2½" x width of fabric strips
star outside: 2-2½" x width of fabric strips
1-4½" x width of fabric strip

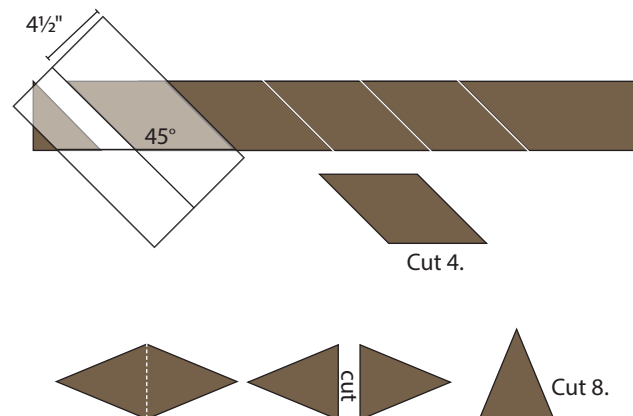
(A) Join 1 center, middle, and outside 2½" x width of fabric strip as shown. Cut left end of the strip set at 45° angle as shown. Place 2½" line on ruler along angled cut edge to cut 8 segments.



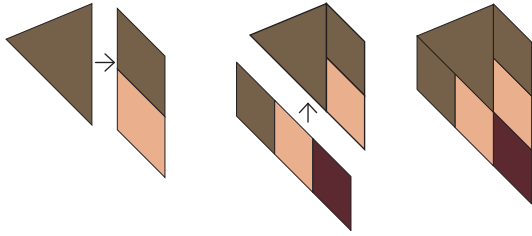
(B) Join 1 middle, and outside 2½" x width of fabric strip as shown. Cut left end of the strip set at 45° angle as shown. Place 2½" line on ruler along angled cut edge to cut 8 segments.



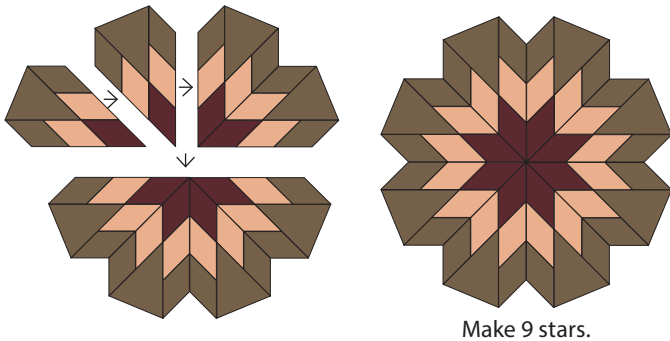
(C) Cut left end of the a 4½" x width of fabric outside strip at 45° angle. Place 4½" line on ruler along angled cut edge to cut 4 segments. Cut the segments in half as shown to make 8 triangles.



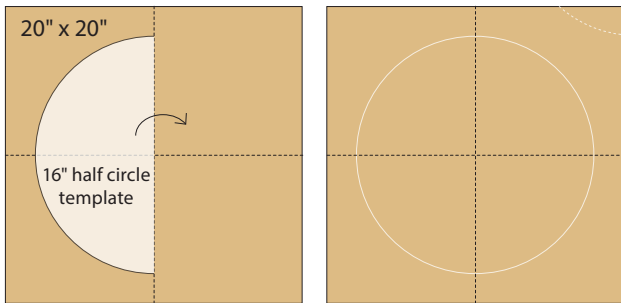
(D) Join the segments as shown to make one star point.
Make 8 points.



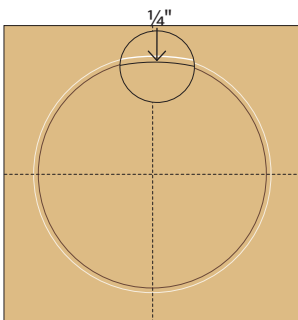
(E) Join the 8 star points as shown to make a star. Make a total of 9 stars.



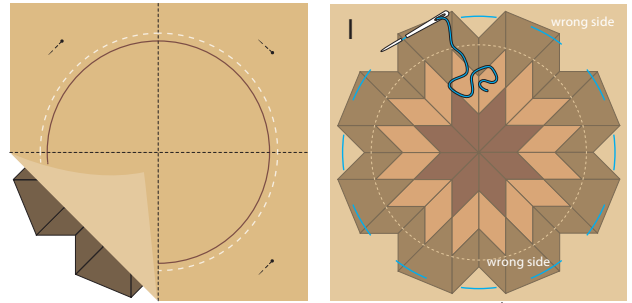
(F) Fold background square into quarters. Press lightly to find center of background square. Align the 1/2 circle template along the center line of the background square and trace circle using a Sewline marking pencil. Flip template to the opposite side of center line and trace to complete circle.



(G) Use Sewline pencil to mark a second circle approximately 1/4" inside the first.



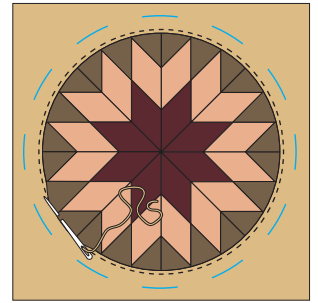
(H) With both blocks facing up center the marked background square on top of the star block. Pin together and then baste together on the outside (white) circle.



(I) On the wrong side of joined blocks stabilize pieced star by basting loose edges before beginning to appliqué

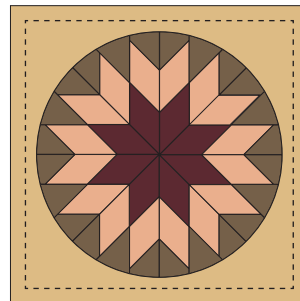
(J) With small sharp scissors carefully cut away the center of the background. Cut away the smaller circle leaving a 1/4" seam allowance. Cut on dark line.

Remove 1" of the basting stitches. With a matching thread, use the needle to sweep the background fabric under. Secure edge with an appliqué stitch – either the blind stitch or tiny whip stitch. Clip into the seam to ease the fabric around the circle as you stitch. Continue until circle is complete.

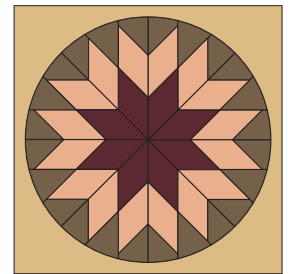


Remove the outer basting stitches. Trim away excess star block fabric on the back of completed block. Place block face down on towel and press from the back. Repeat to make 9 blocks.

(G) Trim the block to 18" x 18".



Trim the block to 18" x 18" unfinished.

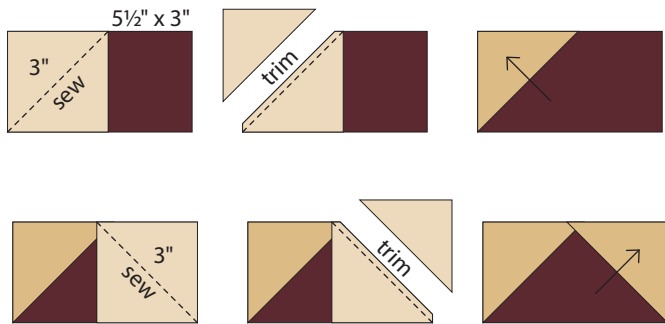


Star Block
18" x 18" unfinished
Make 9.

moda

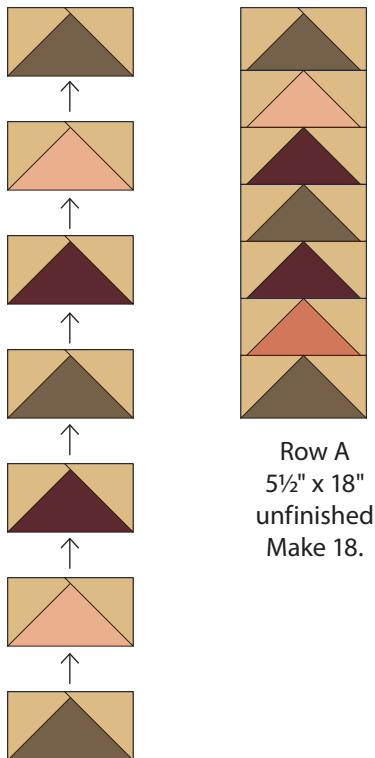
2 Flying Geese A

(A) Draw a diagonal line from corner to corner on the wrong side of 300–3" background squares. Layer a marked square on an end of a 5½" x 3" flying geese rectangle as shown. Sew on the diagonal line, trim ¼" from the sewn line, and press to reveal the triangle. Layer a marked square on the opposite end of the same rectangle as shown. Sew, trim, and press to reveal the triangle. Make 150.



Flying Geese A
5½" x 3" unfinished
Make 150.

(B) Join 7 Flying Geese A as shown. Make 18.

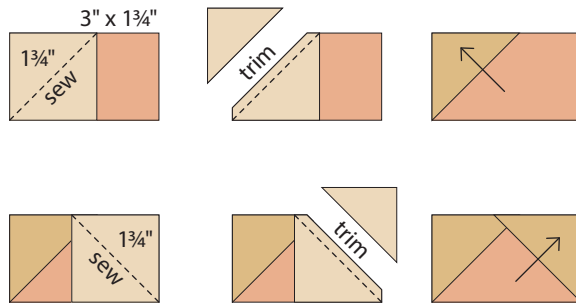


Row A
5½" x 18"
unfinished
Make 18.

moda

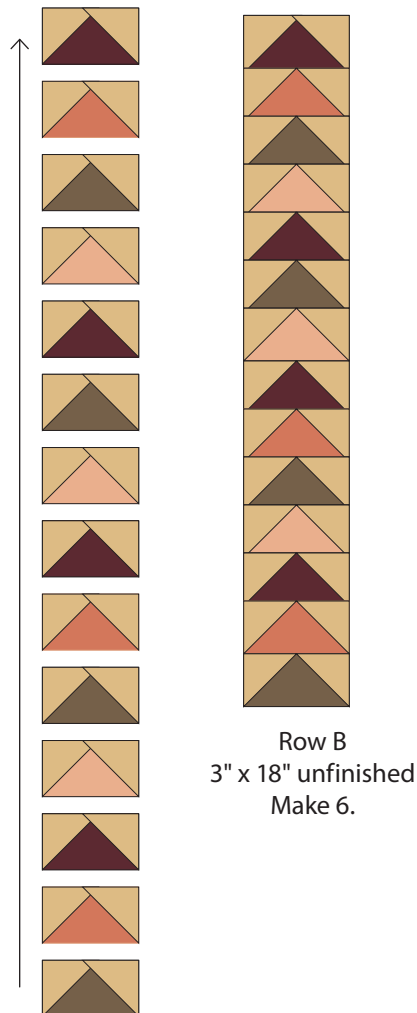
3 Flying Geese B

(A) Draw a diagonal line from corner to corner on the wrong side of 168–1¾" background squares. Layer a marked square on an end of a 3" x 1¾" flying geese rectangle as shown. Sew on the diagonal line, trim ¼" from the sewn line, and press to reveal the triangle. Layer a marked square on the opposite end of the same rectangle as shown. Sew, trim, and press to reveal the triangle. Make 84.



Flying Geese B
3" x 1¾" unfinished
Make 84.

(B) Join 14 Flying Geese B as shown. Make 6.



Row B
3" x 18" unfinished
Make 6.

4 Assemble the quilt top in rows as shown. Join the rows.
Layer, quilt, and bind.



Quilt is 68" x 73" unfinished.

moda

Courtyard 3 Sisters

Quilt is 67½" x 72½".

Fabric Requirements

Stars and Flying Geese: 9 assorted 1 yards

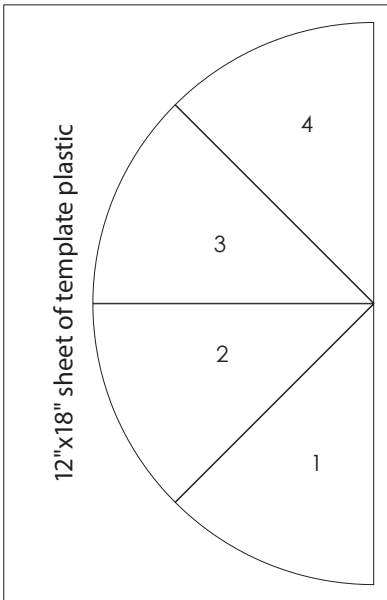
(44120 16, 44122 19, 44123 13,
44124 13, 44124 16, 44125 16
44125 23, 44126 13, 44127 19)

Background: 5¼ yards (44126 11)

Binding: ⅝ yard (44028 11)

Backing: 4⅓ yards

Also Needed: Large sheet (12"x18") of template plastic



⅛ of the circle

16" Circle template
Actual size.
(for reverse appliqué)
Trace 4 times to make a half circle.
Make template plastic.

Courtyard 3 Sisters

size check
1" square



moda

MODAFABRICS.COM

PS44120