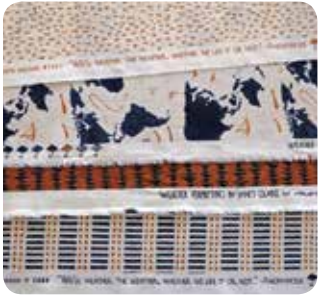


# WEATHER PERMITTING



*moda* "We'll weather the weather, whether we like it or not." -ANONYMOUS



Janet Clare



THEY SAY...

that the only topic of conversation here in the UK is our charming weather. And I'd like to tell you that it's not true but, well... I haven't had too many conversations where it hasn't come up!

So it is high time this Brit designed a few pieces of weather-inspired fabric!

WEATHER PERMITTING is polite and friendly: a little warm rain on a summer day, a good breeze to blow the cobwebs away, and fluffy white clouds floating by in a blue sky.

Add a map of the world and some meteorological symbols and you're got all you need to create quilts for explorers, daydreamers and scholars, for holidays, picnics and beach days... or even those feeling "under the weather" days.



1463 11



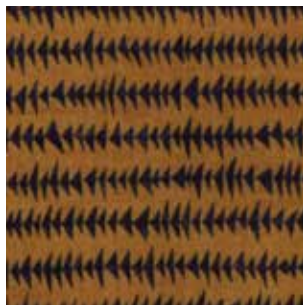
1466 11



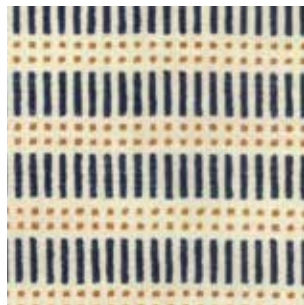
1357 67



1463 15



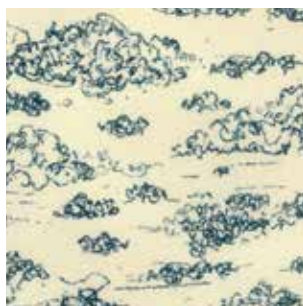
1465 18



1464 12



1466 24



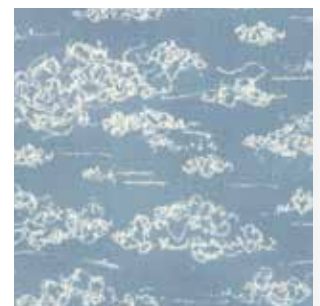
1462 13



1461 11



1462 11



1462 14





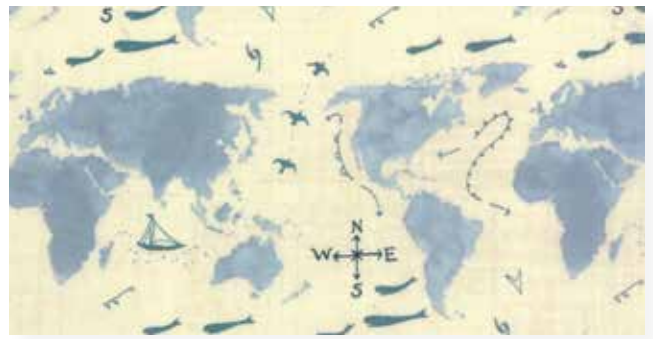
JC 185/JC 185G Newton 44"x36"



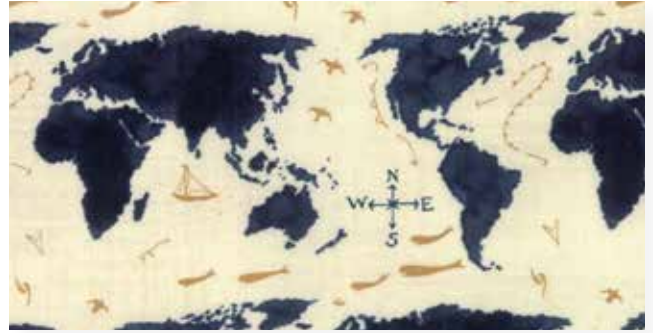
JC 184/JC 184G Greenwich 44"x44"



JC 186/JC 186G  
Thunder and Lightning 60"x84"



1460 12



1460 16

*moda*



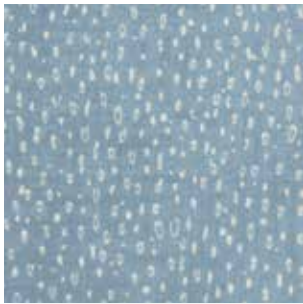
1460 17



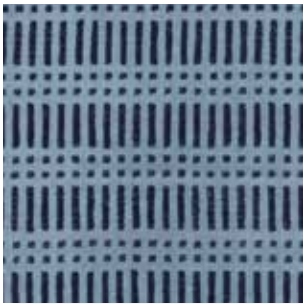




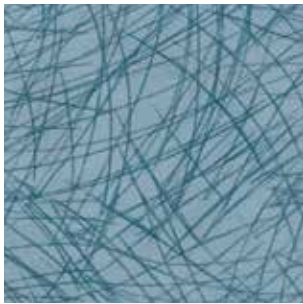
1357 68



1463 16



1464 13



1466 16



1357 69



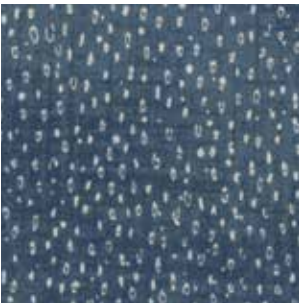
1465 15



1466 19



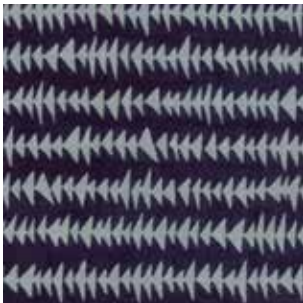
1462 16



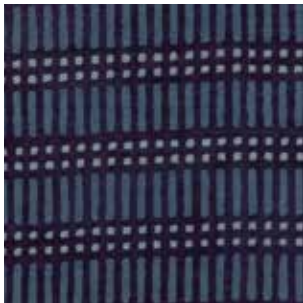
1463 17



1461 16



1465 16



1464 15



1357 70



1460 20



1461 18



1463 21

1460

Asst. 15 Asst. 8

AB F8 JR LC MC PP

• 30 Prints • 100% Premium Cotton

JR's, LC's, MC's & PP's include two each of 1460, 1463 & 1357-70

OCTOBER DELIVERY