

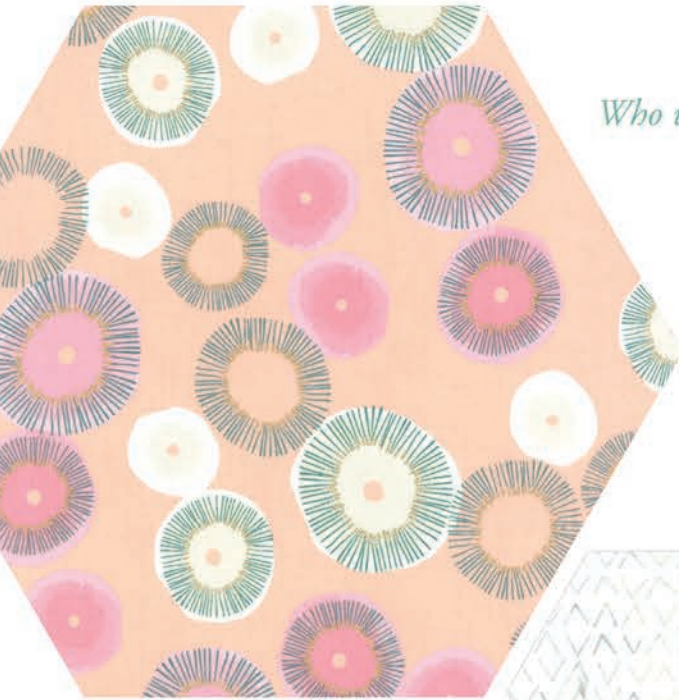
# Day in Paris

ZEN CHIC

*Who wouldn't enjoy a day in Paris, the fashion capital of the world?*

Zen Chic's newest group *DAY IN PARIS* reflects this extraordinary elegance and feminine flair with a color palette of cool aqua and chartreuse, a deep navy and a soft pale pink, enhanced by little splashes of gold.

Use these sophisticated fabrics to create one of a kind chic and stylish quilts!

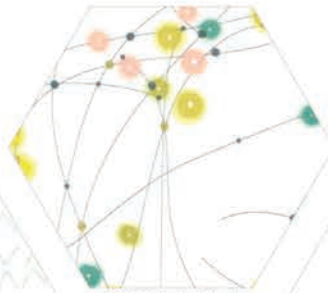


1680 13M

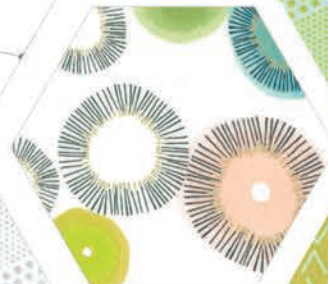
M = Metallic



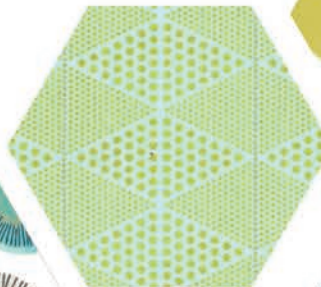
1685 11



1681 11M



1680 11M



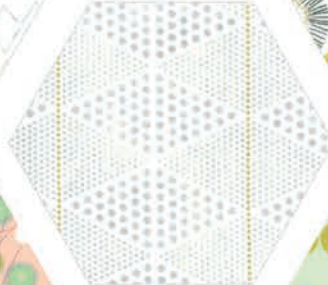
1684 15M



1686 13



1681 13M



1684 11M



1683 16M



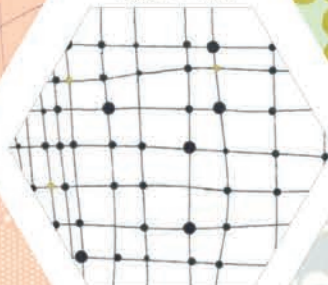
1685 15



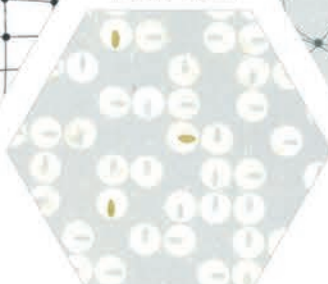
1683 14M



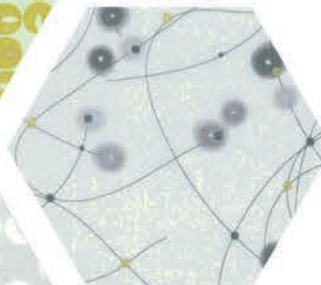
1684 13M



1682 11M



1683 12M



1681 12M

Live...la vie en rose!



1686 14

1683 15M

1684 16M

1681 16M

1680 16M

1680 15M

1686 16

1682 22M

1683 17M

1681 17M

1686 11

1680 12M

1686 17

1685 12

*moda*

1682 14M

1680 18M

1684 18M

## Patterns by Zen Chic.....



ZC XPQP / ZC XPQPG  
**X and Plus** 83" x 83"



ZC BO2QP / ZC BO2QPG  
**Bowls** 55" x 55"  
LC friendly



ZC LEQP / ZC LEQPG  
**Let's Fly** 60" x 60"  
LC friendly



ZC FAQP / ZC FAQPG  
**Faded** 73" x 73"

1680

Asst.  
15

Asst.  
8

AB

F8

JR

LC

MC

PP

•32 Prints •100% Premium Cotton  
JR's, LC's, MC's & PP's include two each of 1685 and 1686.