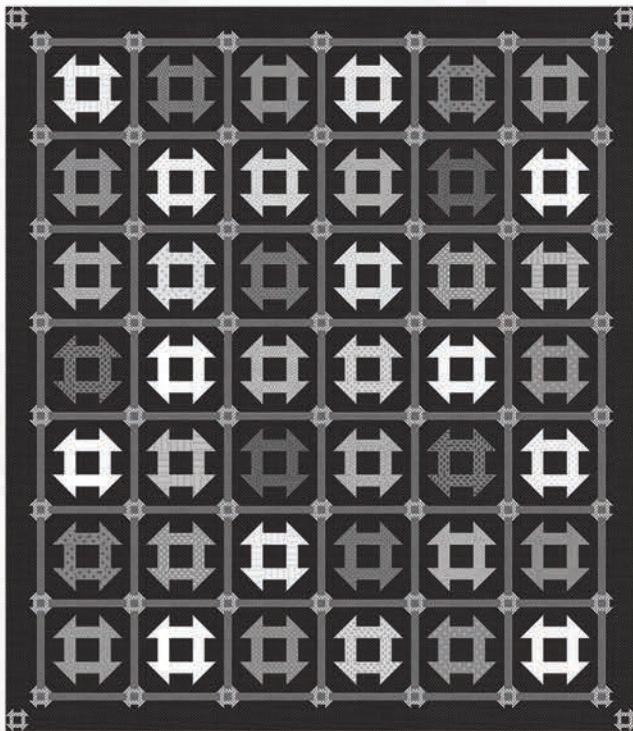


# URBAN FARMHOUSE GATHERINGS

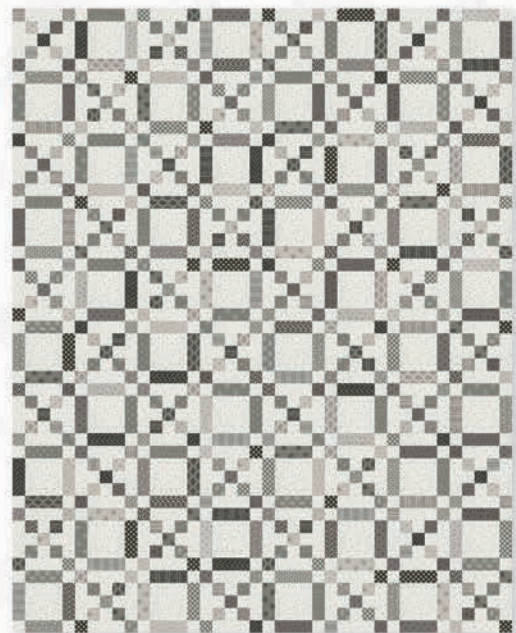
It's time for something new from Primitive Gatherings. Tiny vintage prints with delicate details are repurposed and paired with shades of cream and gray to perfectly complete the current decorating trend of the modern Farmhouse. We all love a beautiful space to live in, and our new Urban Farmhouse Gatherings collection and upcoming book will get you on the path of creating quilts and pillows to cozy up your home.

 HOUSE + LOVE = HOME   
PRIMITIVE GATHERINGS

PRI 1007 / PRI 1007G  
HOLE IN THE BARN DOOR - 81" x 93"

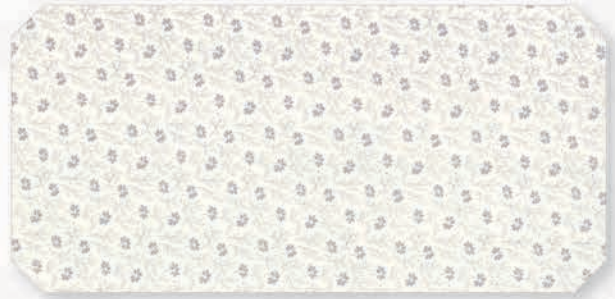


PRI 1007 / PRI 1007G  
GRAY STONE FARM - 40" x 50"





Lacey Flower - 1280 15



Aster - 1282 15 \*



Leaf Flower - 1283 15



Double Bubble - 1285 15 \*



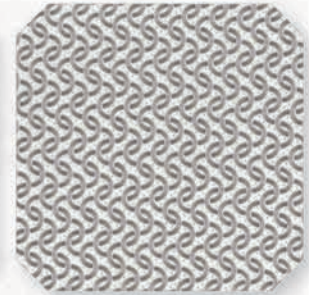
Leaf Stripe - 1287 15



Diamond Bud - 1281 15 \*



Gridlock - 1284 15 \*



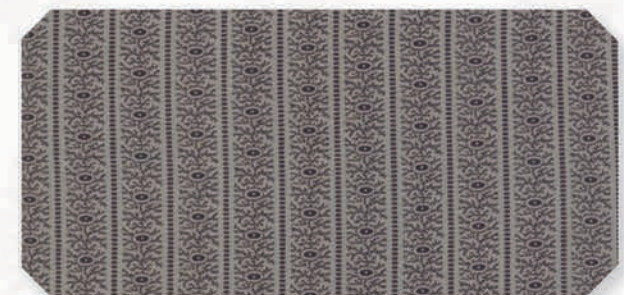
Arc - 1286 16



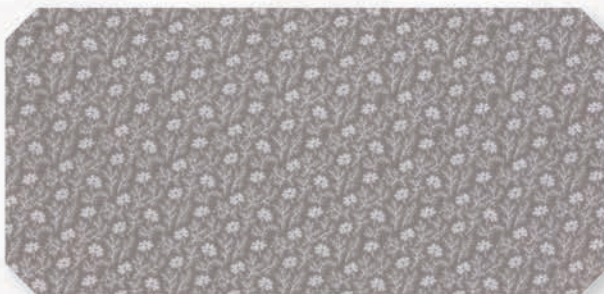
Diamond Bud - 1281 12



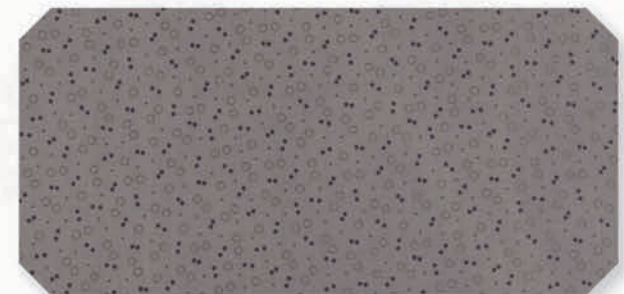
Aster - 1282 12



Leaf Stripe - 1287 12



Aster - 1282 11 \*



Double Bubble - 1285 12

MILK

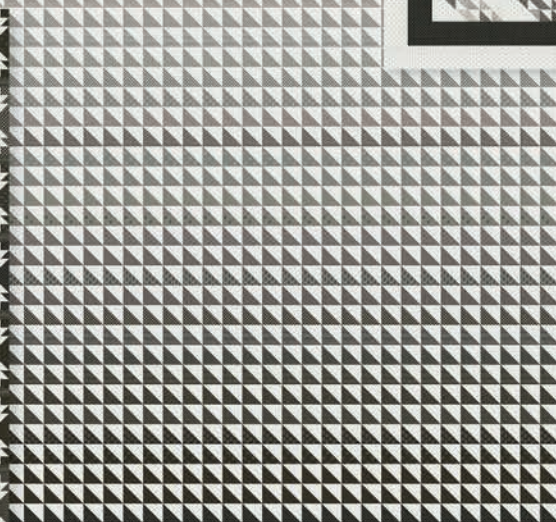
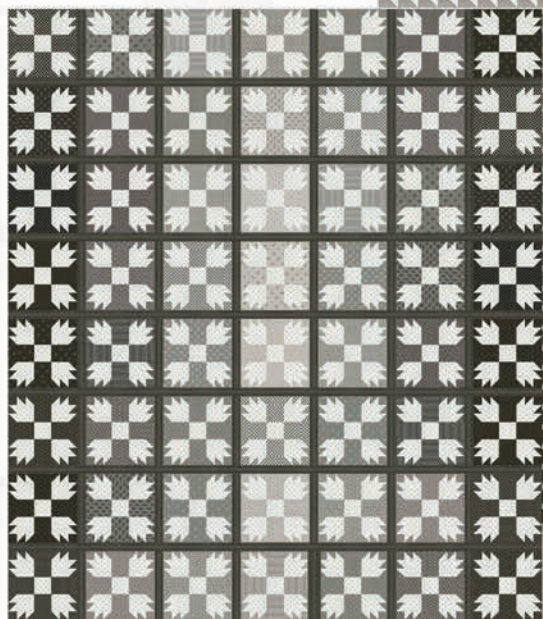
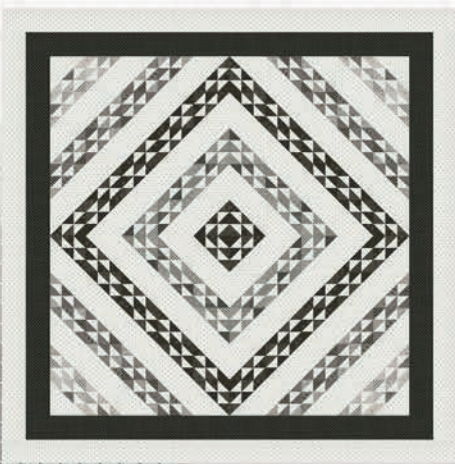
GALVENIZED GREY



PRI 1007 / PRI 1007G  
ASSORTED PILLOWS

PRI 1007 / PRI 1007G  
BROKEN FENCES - 57" x 57"

PRI 1007 / PRI 1007G  
FADE AWAY - 90" x 100" - FQ Friendly



PRI 1007 / PRI 1007G  
BEAR NECESSITIES - 62" x 71"

ALL QUILTS FOR URBAN FARMHOUSE  
GATHERINGS ARE IN THE BOOK -  
URBAN FARMHOUSE GATHERINGS



Leaf Flower - 1283 14 \*



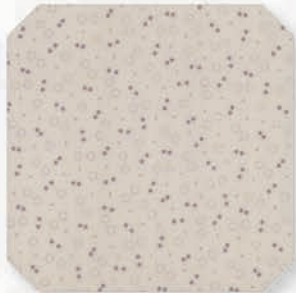
Diamond Bud - 1281 14 \*



Aster - 1282 14



Lacey Flower - 1280 14 \*



Double Bubble - 1285 14 \*



Arc - 1286 15



Leaf Stripe - 1287 14

DOVE

# DESIGNER TRIVIA



## LISA BONGEAN

**First collection** – Little Gatherings in 2011

**Favorite Quilt Market memory** – We've been to a lot of Quilt Markets and have a lot of great memories but my favorite is probably the Moda Party that was dubbed the "Redneck Prom". Nick and I got "dressed" up, I wore an old bridesmaid dress that I'd chopped up a bit and Nick looked just like Dog, the Bounty Hunter.

**Favorite pre-cut** – Fat Quarters! I love lots of fabric to work with.

**Years sewing and quilting** – 23 years.

**Who taught you to sew** – My Home Ecc teacher, on a Viking sewing machine with those funny cams in them that needed to be switched out for different stitches. My first quilt was a Care Bear panel with borders added. I tied it with yarn - that was in the 8th grade. I took my first patchwork class when I was 28, it was a class on rotary cutting. I made a checkerboard kind of quilt, then went out into the quilt shop, picked out a pattern and essentially re-designed it to make it "my own." I've been doing that ever since.

First Fabric Collection  
**LITTLE  
GATHERINGS**

primitivegatherings.us



**TRACTOR OIL GREY**



Lacey Flower - 1280 13 \*



Diamond Bud - 1281 13



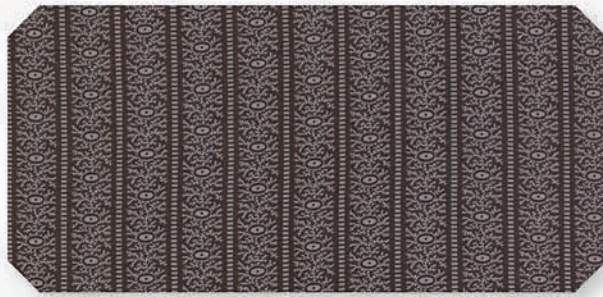
Aster - 1282 13 \*



Leaf Flower - 1283 13



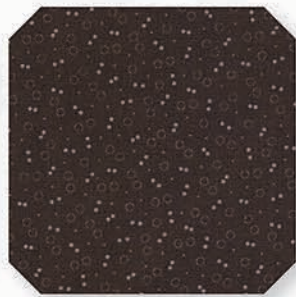
Gridlock - 1284 12



Leaf Stripe - 1287 13 \*



Gridlock - 1284 13 \*



Double Bubble - 1285 13



Arc - 1286 12 \*



Arc - 1286 13

PRI 1007 / PRI 1007G  
**WEATHER VANE STAR SCRAPPY**  
 15" x 15" - LC Friendly

PRI 1007 / PRI 1007G  
**WEATHER VANE STAR - 80" x 80"**



PRI 1007 / PRI 1007G  
**WEATHER VANE STAR ALTERNATE - 80" x 80"**



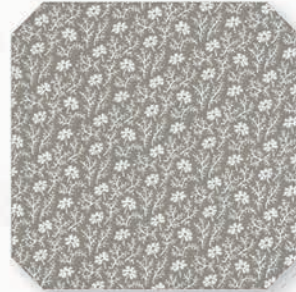
Lacey Flower - 1280 11



Diamond Bud - 1281 16\*



Leaf Flower - 1283 12\*



Aster - 1282 16



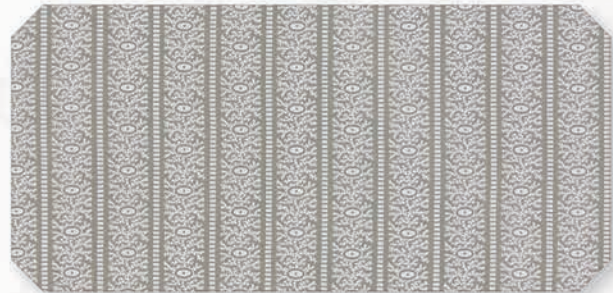
Leaf Flower - 1283 11



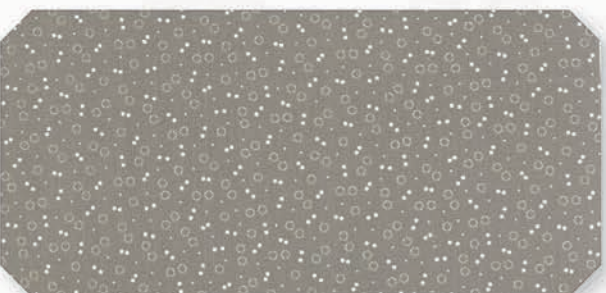
Arc - 1286 11\*



Gridlock - 1284 11



Leaf Stripe - 1287 11\*



Double Bubble - 1285 16\*



Lacey Flower - 1280 12\*

ASH GREY

1280

Asst.  
15

Asst.  
10

Low Cal  
10

AB

F8

HB

JR

LC

MC

PP

OCTOBER DELIVERY

• 40 Prints

• 100% Premium Cotton