

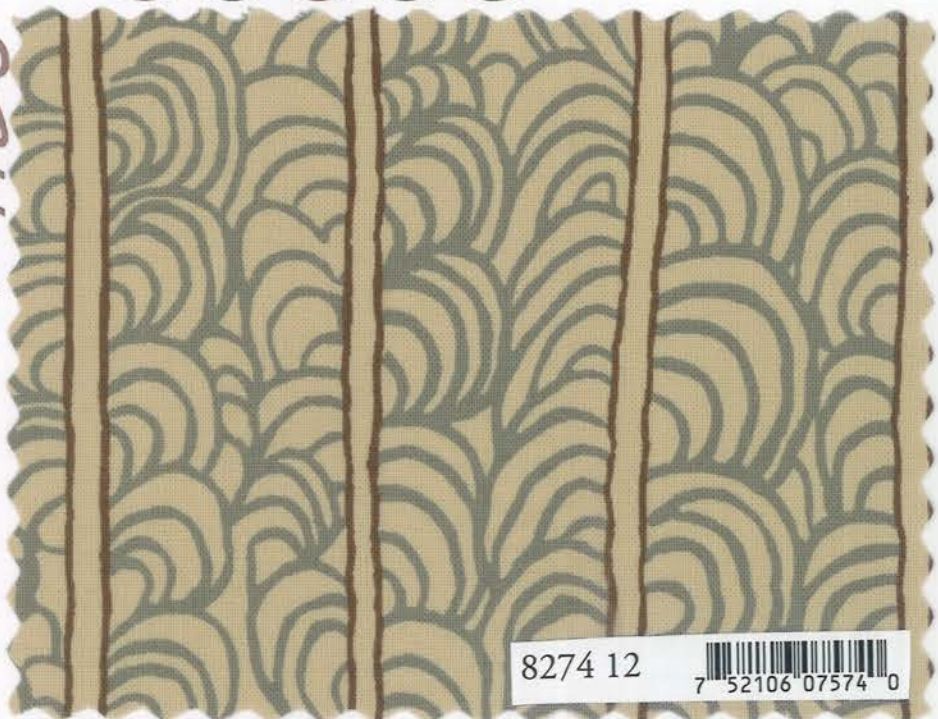
moda

Modernism

Barbara Brackman



CLASSIC



8274 12  7 52106 07574 0



8271 12  7 52106 07557 3



8270 12  7 52106 07553 5

moda

Modernism

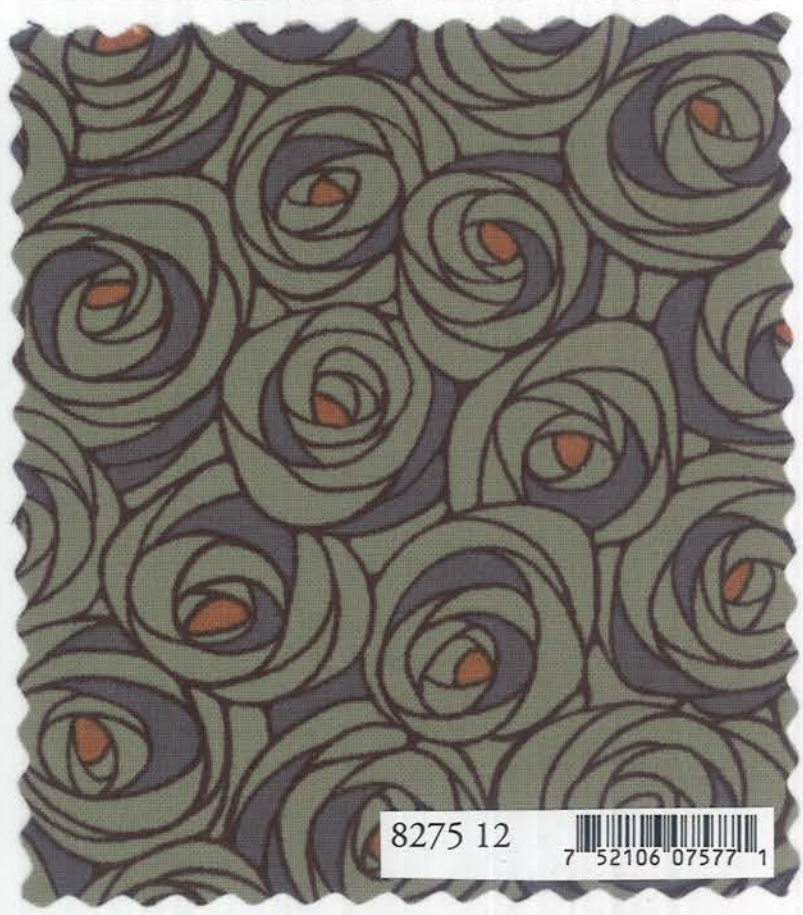
Barbara Brackman



CLASSIC



8273 12 



8275 12 



8276 12 



8273 20 



8277 12 

moda

Modernism

Barbara Brackman




CLASSIC



8274 20  7 52106 07576 4



8273 11  7 52106 07569 6



8270 14  7 52106 07555 9

moda

Modernism

Barbara Brackman




CLASSIC



9900 180 



9900 125 



8276 11 

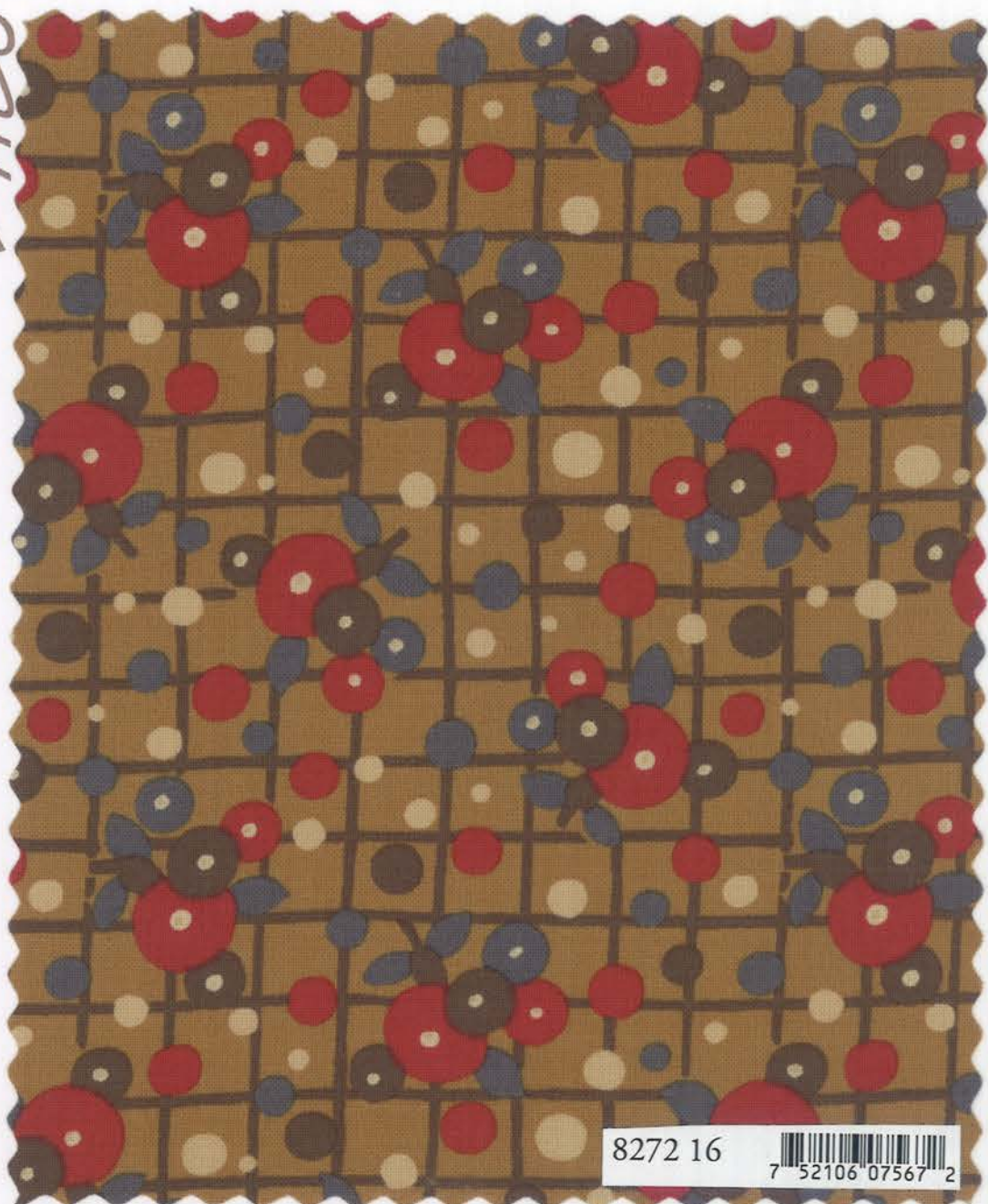
moda

Modernism

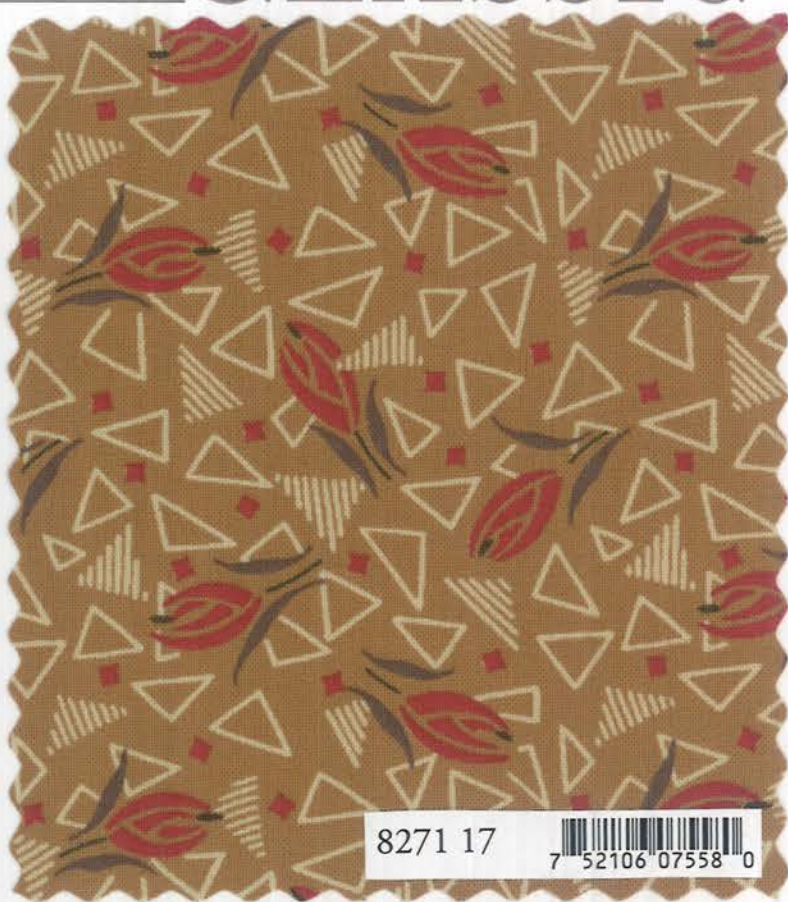
Barbara Brackman



CLASSIC



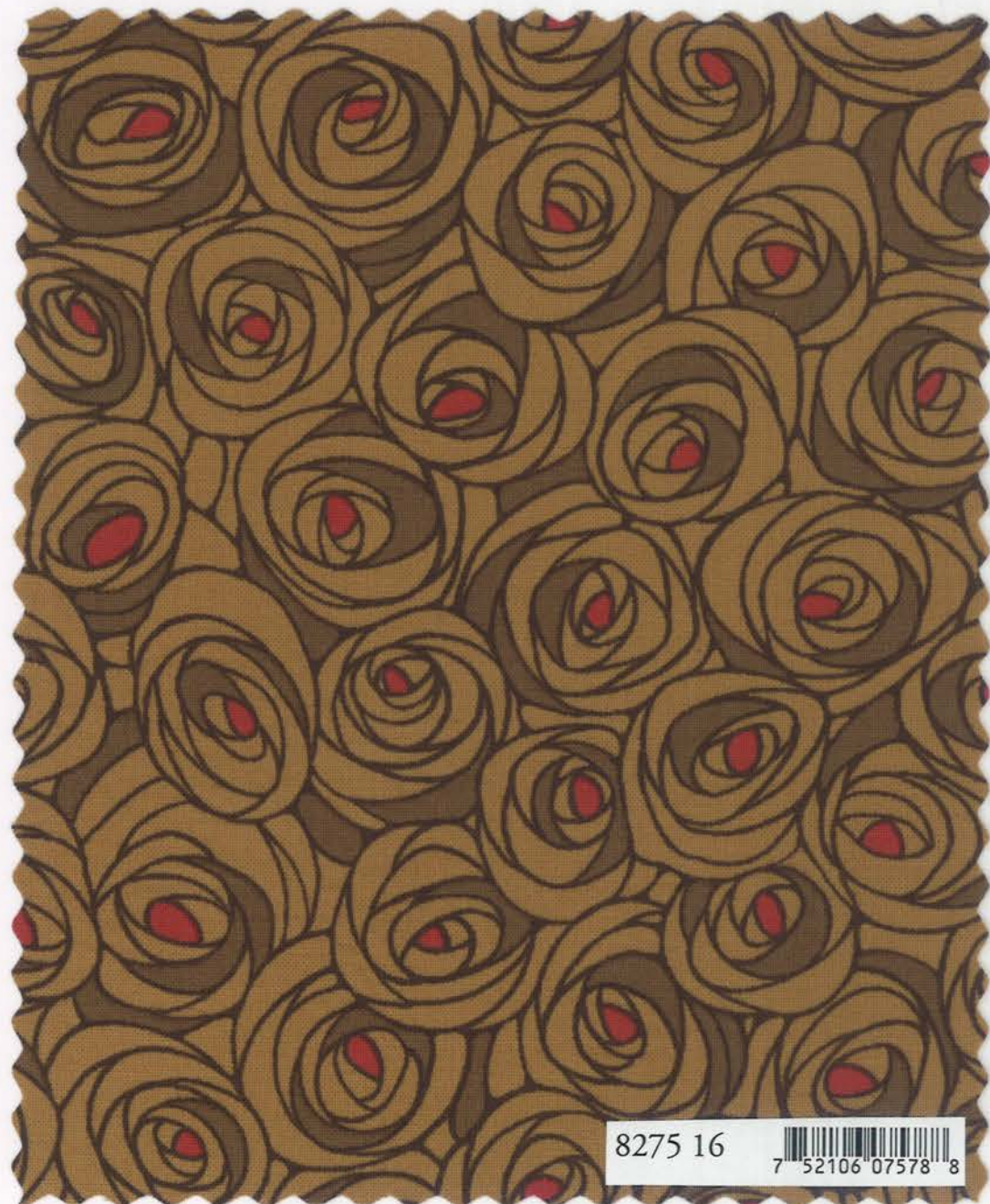
8272 16 



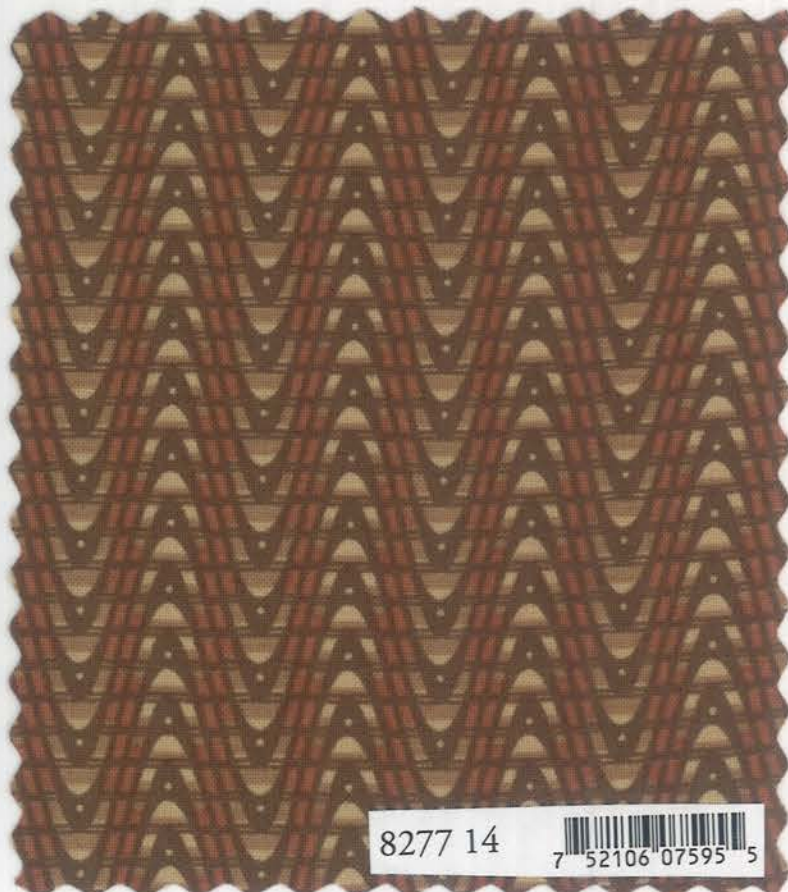
8271 17 



9900 194 



8275 16 



8277 14 

moda

Modernism

Barbara Brackman




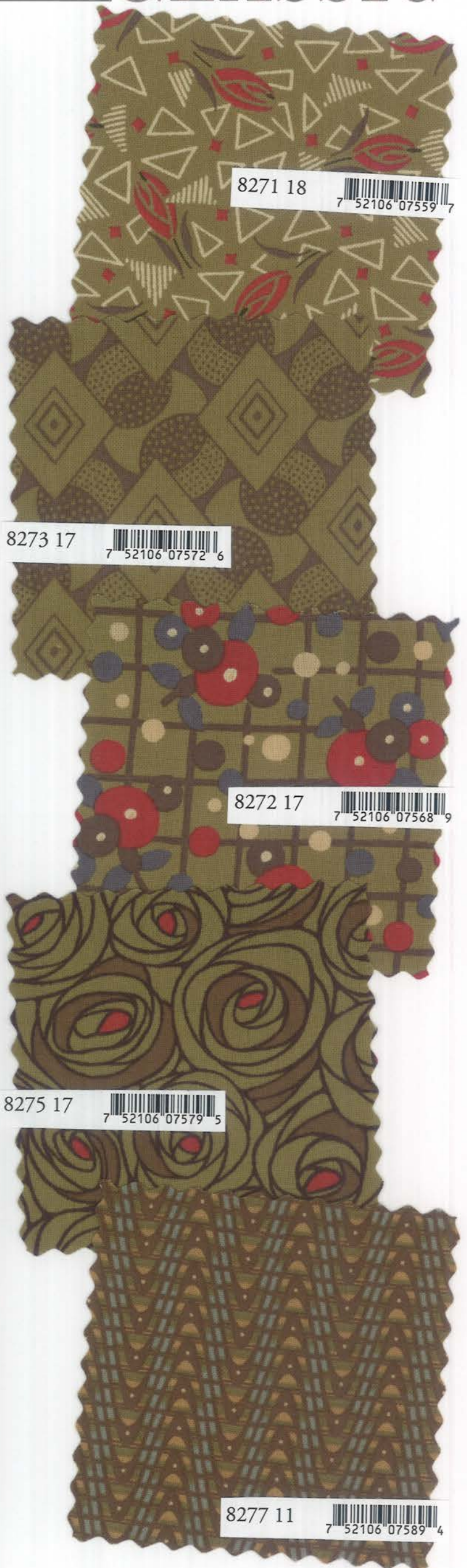
CLASSIC



8270 17 



8276 17 



8271 18 

8273 17 

8272 17 

8275 17 

8277 11 

moda

Modernism

Barbara Brackman



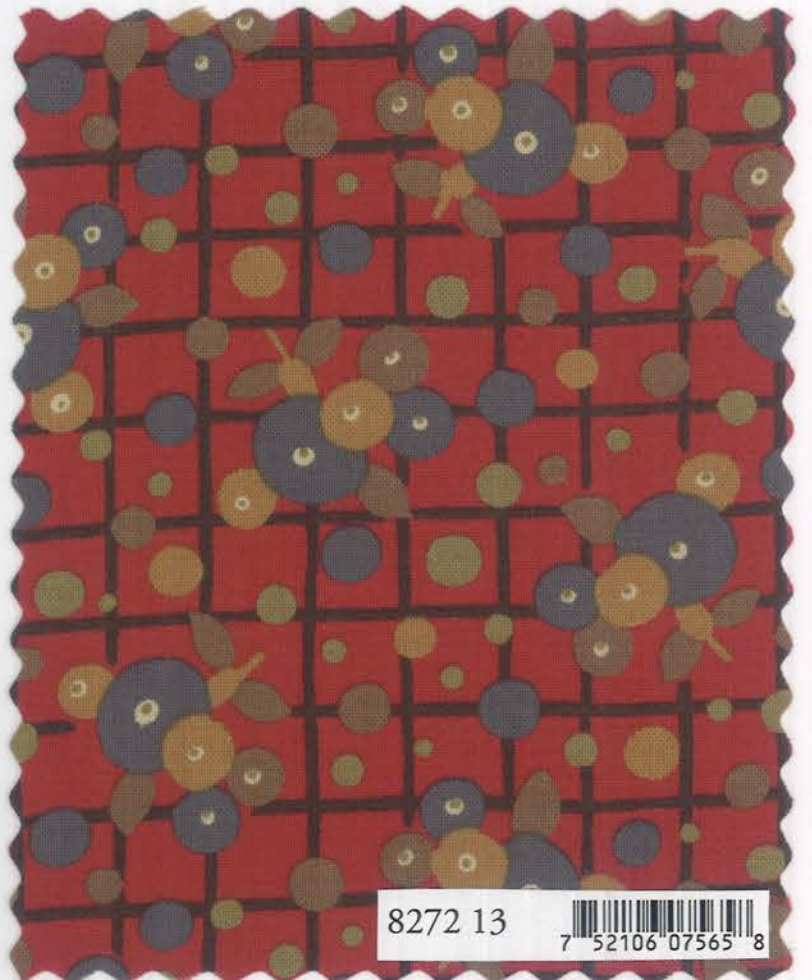
CLASSIC



8270 13 



9900 42 



8272 13 



8276 13 



8273 13 

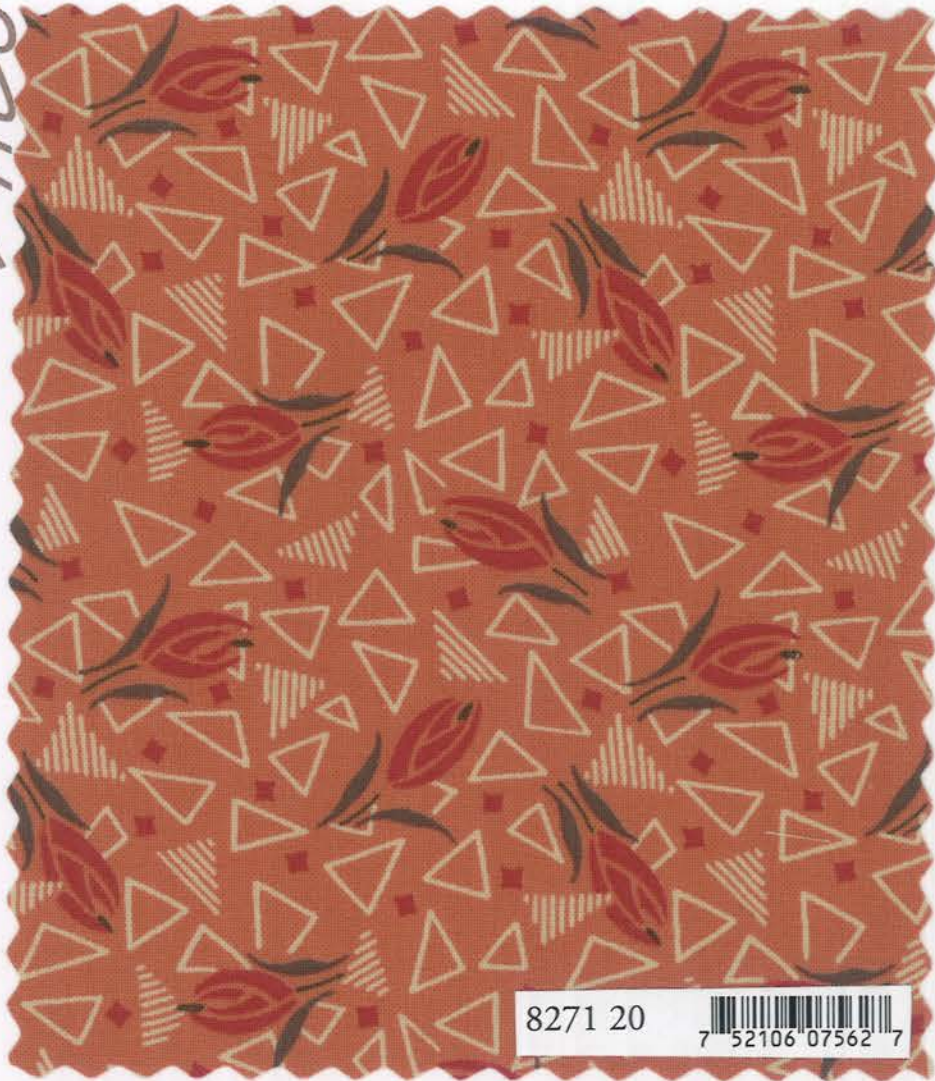
moda

Modernism

Barbara Brackman



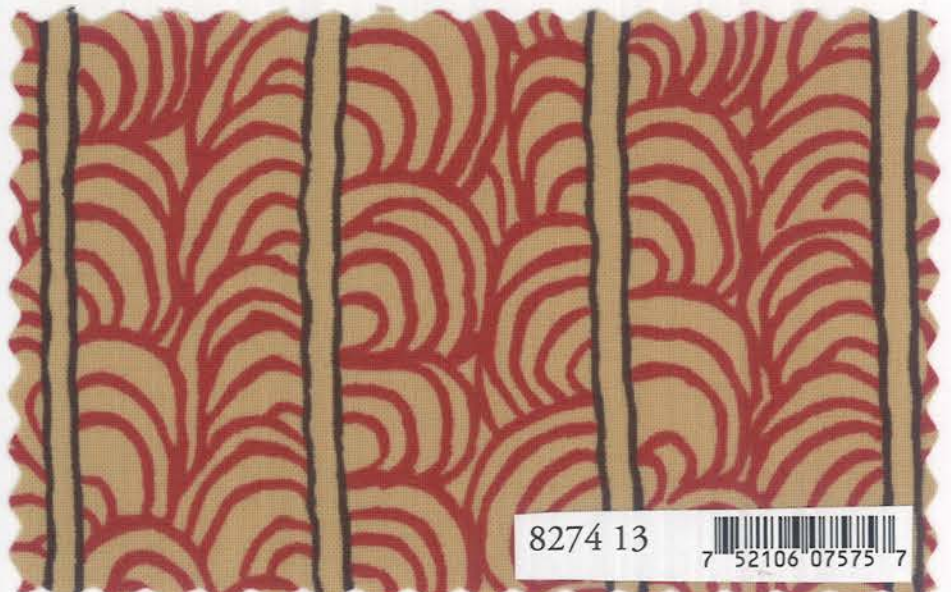
CLASSIC



8271 20 



9900 13 



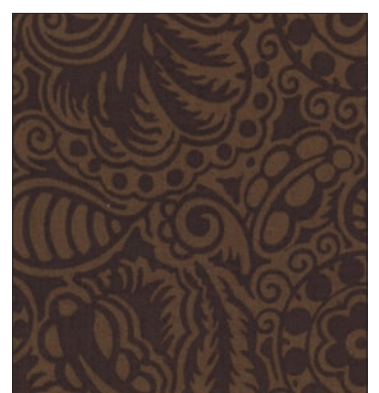
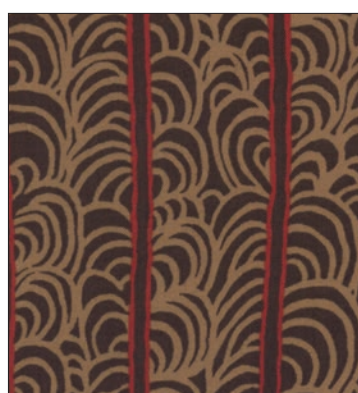
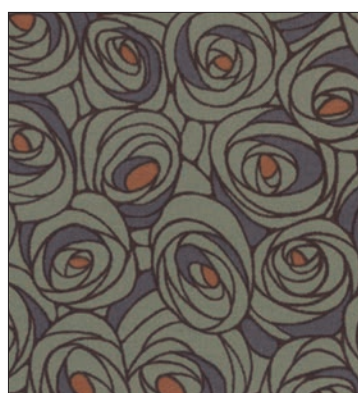
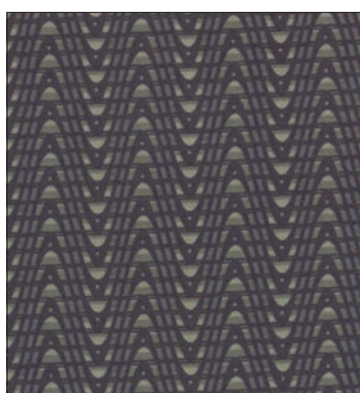
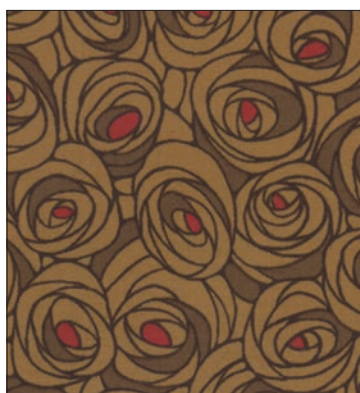
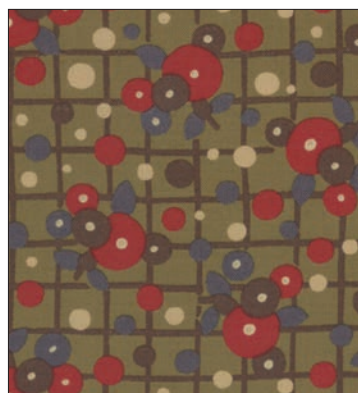
8274 13 



8276 21 

Low Cal
 **Modernism**

Barbara Brackman



8270-10H



10 yards each of 20 skus

moda
MODAFABRICS.COM

Easy Kit! **Modernism**

Barbara Brackman



Size: 66"x72"



		Yardage	1Q	10Q
	8270F8	blocks	1	10
	8270PP	inner border	2	20
	9900-13	background	1 ⁵ / ₈	16 ¹ / ₄
	9900-42	blocks	F8	1 ¹ / ₄
	8276-21	outer border	1 ¹ / ₂	15
	8275-16	binding	⁵ / ₈	6 ¹ / ₄

Yardages provided at the time of printing may change. Please consult the printed pattern before cutting kits.

moda

MODAFABRICS.COM