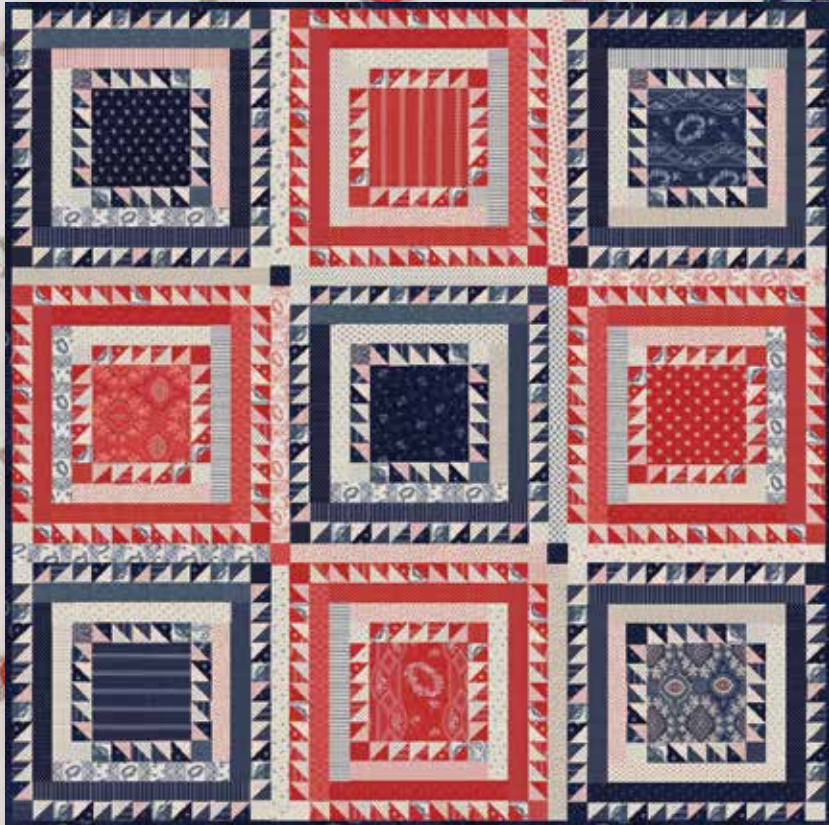


PORTSMOUTH

Minick & Simpson






MS 1501 / MS 1501G Sweet William Size: 82" x 82"

Portsmouth is Americana – as interpreted by Minick and Simpson. Indigos and shirtings mix with crisp, clean prints in red, white and blue. When we found the large antique indigo print with the circular roses, it was so quintessentially “us” that it became the starting point for the collection.

Pattern MS 1501 Sweet William (shown here) by Minick & Simpson.

More patterns, yardage, and pre-cuts available this **August 2018**.

     modafabrics.com

© 2018 moda fabrics • all rights reserved

14860 21



14861 21



14863 21



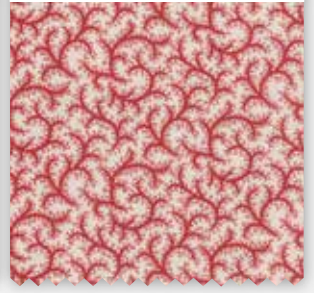
14862 11



14867 11



14864 11 *



14866 11 *



14865 11



14863 13



14862 13 *



14861 13 *



14860 13 *



14866 13



14867 13 *



PORTSMOUTH *Minick & Simpson*

14861 11 *



14860 22



14865 21 *



14863 22 *



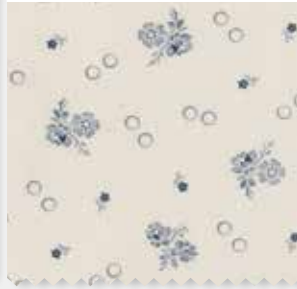
14861 15



14862 15 *



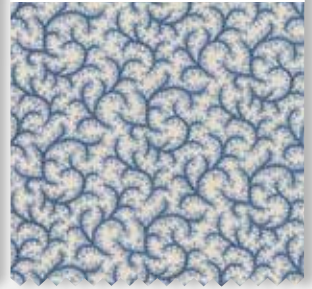
14862 21



14867 21 *



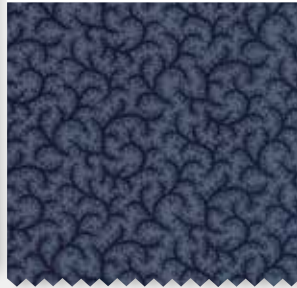
14864 22



14861 16 *



14864 15 *



14860 16 *



14867 16 *



14862 16



14863 16



14860 11 *



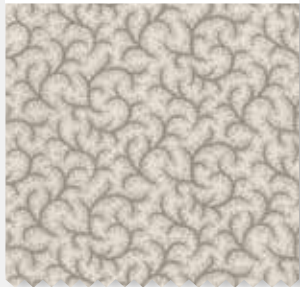
14863 11 *



14866 21



14864 21



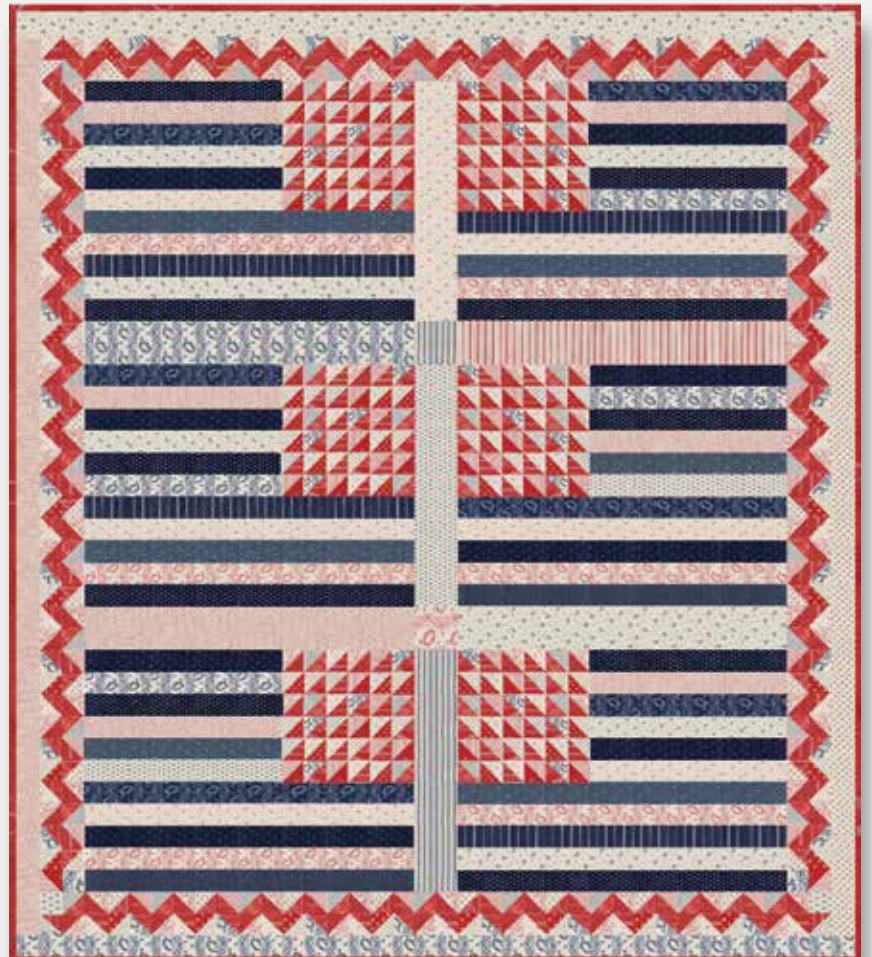
14865 12



14863 12



14862 12 *



MS 1304 / MS 1304G Hurrah Size: 76" x 86"